

Onalespib

Catalog No: tcsc0969



Available Sizes

Size: 5mg

Size: 10mg

Size: 50mg

Size: 100mg



Specifications

CAS No:

912999-49-6

Formula:

$C_{24}H_{31}N_3O_3$

Pathway:

Metabolic Enzyme/Protease;Cell Cycle/DNA Damage

Target:

HSP;HSP

Purity / Grade:

>98%

Solubility:

DMSO : ≥ 33 mg/mL (80.58 mM)

Alternative Names:

AT13387

Observed Molecular Weight:

409.52

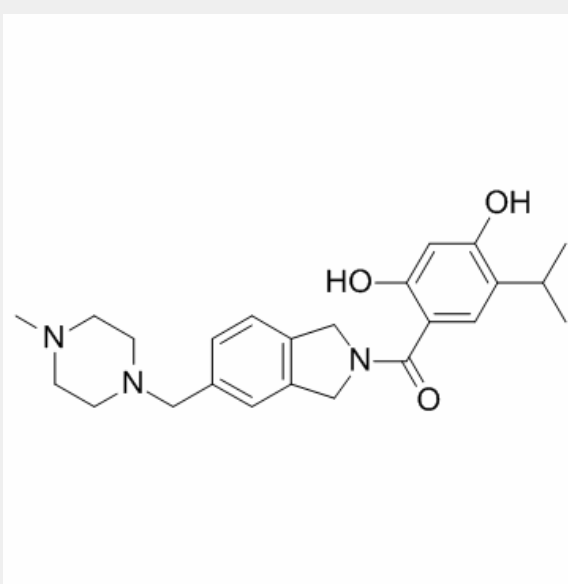
Product Description

Onalespib (AT13387) is a potent inhibitor of **Hsp90**, with a **K_d** of 0.71 nM.

IC50 & Target: Kd: 0.71 nM (Hsp90)^[1]

In Vitro: Onalespib (Compound 35) is a potent inhibitor of Hsp90, with K_d of 0.71 nM. Onalespib shows potent antiproliferative activity in HCT116 cells, with an IC₅₀ of 31 nM. Onalespib also strongly inhibits the proliferation of a panel of human tumor cell lines, showing IC₅₀ of [1]. Onalespib exhibits cytotoxic activity against many of the PPTP cell lines, with median IC₅₀ of 41 nM^[2].

In Vivo: Onalespib (60 mg/kg, ip 3 days on and 3 days off for four cycles) shows antitumor activity in nude BALB/c mice bearing early stage HCT116 human colon carcinoma xenografts^[1]. Onalespib (40 or 60 mg/kg, i.p.) induces significant differences in EFS distribution compared to controls in 17% evaluable solid tumor xenografts, but in none of the ALL xenografts^[2].



All products are for RESEARCH USE ONLY. Not for diagnostic & therapeutic purposes!