

Kaempferide

Catalog No: tcsc0957



Available Sizes

Size: 5mg

Size: 10mg

Size: 50mg



Specifications

CAS No:

491-54-3

Formula:

$C_{16}H_{12}O_6$

Pathway:

Others;Autophagy

Target:

Estrogen Receptor/ERR;Autophagy

Purity / Grade:

>98%

Solubility:

DMSO : 20 mg/mL (66.61 mM; Need ultrasonic)

Alternative Names:

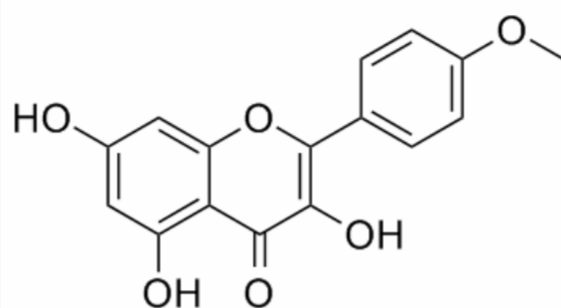
Kaempferol 4'-O-methyl ether

Observed Molecular Weight:

300.26

Product Description

Kaempferide is an O-methylated flavonol, a type of chemical compound. It can be found in *Kaempferia galanga* (aromatic ginger). The enzyme kaempferol 4'-O-methyltransferase uses S-adenosyl-L-methionine and kaempferol to produce S-adenosyl-L-homocysteine and kaempferide. P-glycoproteins.



All products are for RESEARCH USE ONLY. Not for diagnostic & therapeutic purposes!