

Skepinone-L

Catalog No: tcsc0941



Available Sizes

Size: 5mg

Size: 10mg

Size: 50mg



Specifications

CAS No:

1221485-83-1

Formula:

$C_{24}H_{21}F_2NO_4$

Pathway:

MAPK/ERK Pathway

Target:

p38 MAPK

Purity / Grade:

>98%

Solubility:

10 mM in DMSO

Alternative Names:

CBS3830

Observed Molecular Weight:

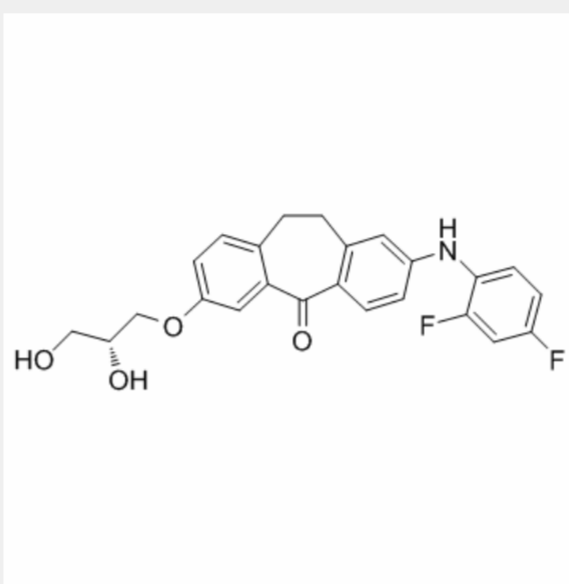
425.42

Product Description

Skepinone-L (CBS3830) is a selective p38 mitogen-activated protein kinase inhibitor.

IC50 & Target: p38MAPK^[1].

In Vitro: Skepinone-L (CBS3830), the first ATP-competitive p38 MAPK inhibitor with excellent in vivo efficacy and selectivity. Therefore, Skepinone-L (CBS3830) is a valuable probe for chem. biol. research, and it may foster the development of a unique class of kinase inhibitors.



All products are for RESEARCH USE ONLY. Not for diagnostic & therapeutic purposes!