

# Loteprednol Etabonate

Catalog No: tcsc0900



## Available Sizes

**Size:** 10mg

**Size:** 50mg

**Size:** 100mg



## Specifications

**CAS No:**

82034-46-6

**Formula:**

$C_{24}H_{31}ClO_7$

**Pathway:**

GPCR/G Protein

**Target:**

Glucocorticoid Receptor

**Purity / Grade:**

>98%

**Solubility:**

DMSO :  $\geq 45$  mg/mL (96.37 mM)

**Observed Molecular Weight:**

466.95

## Product Description

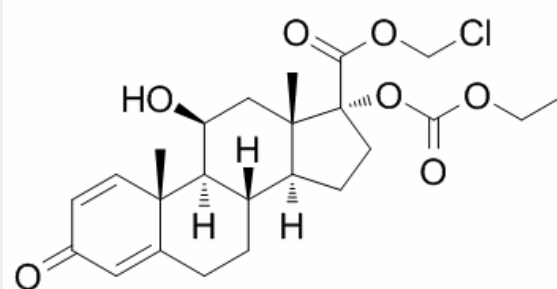
Loteprednol Etabonate is an anti-inflammatory corticosteroid used in optometry and ophthalmology.

IC50 Value:

Target: Glucocorticoid Receptor

in vitro:

in vivo: Intravenous administration of loteprednol etabonate (5 mg/kg) to dogs revealed a terminal half-life of 2.8 h, a volume of distribution of 3.7 L/kg, and a total body clearance of 0.9 L/h/kg. Intact loteprednol etabonate was not detectable in the urine. After oral administration of the drug (5 mg/kg) to dogs, only metabolites, but no intact drug, were found in the plasma, an indication for a high first-pass effect. A pronounced binding of the drug to plasma protein (> 90%) and a high erythrocyte-buffer partition coefficient of 7.8 were determined in vitro.



All products are for RESEARCH USE ONLY. Not for diagnostic & therapeutic purposes!