

Pramipexole (dihydrochloride)

Catalog No: tcsc0890



Available Sizes

Size: 10mg

Size: 50mg



Specifications

CAS No:

104632-25-9

Formula:

$C_{10}H_{19}Cl_2N_3S$

Pathway:

GPCR/G Protein;Neuronal Signaling;Autophagy

Target:

Dopamine Receptor;Dopamine Receptor;Autophagy

Purity / Grade:

>98%

Solubility:

H₂O : ≥ 50 mg/mL (175.90 mM)

Observed Molecular Weight:

284.25

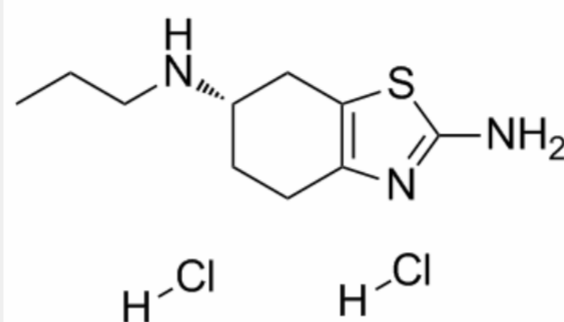
Product Description

Pramipexole 2HCl is a partial/full D_{2S}, D_{2L}, D₃, D₄ receptor agonist with a K_i of 3.9, 2.2, 0.5 and 5.1 nM for D_{2S}, D_{2L}, D₃, D₄ receptor, respectively.

IC₅₀ Value: 3.9 nM(D_{2S}); 2.2 nM(D_{2L}); 0.5 nM(D₃); 5.1 nM(D₄)

Target: Dopamine Receptor

Pramipexole dihydrochloride is a dopamine receptor agonist with selectivity for the D3 receptor (K_i values are 3.9, 3.3, 0.5 and 3.9 nM for D2L, D2S, D3 and D4 receptors respectively). Pramipexole dihydrochloride exhibits negligible affinity for D1 and D5 receptors. Pramipexole has been found to have neuroprotective effects independent of its dopamine receptor agonism. It reduces mitochondrial reactive oxygen species (ROS) production and inhibits the activation of apoptotic pathways. Pramipexole displays activity in the treatment of Parkinson's disease (PD) and restless legs syndrome (RLS).



All products are for RESEARCH USE ONLY. Not for diagnostic & therapeutic purposes!