

# Episilvestrol

## Catalog No: tcsc0743



### Available Sizes

**Size:** 500ug

**Size:** 1mg



### Specifications

**CAS No:**

697235-39-5

**Formula:**

$C_{34}H_{38}O_{13}$

**Pathway:**

Cell Cycle/DNA Damage

**Target:**

Eukaryotic Initiation Factor (eIF)

**Purity / Grade:**

>98%

**Solubility:**

10 mM in DMSO

**Observed Molecular Weight:**

654.66

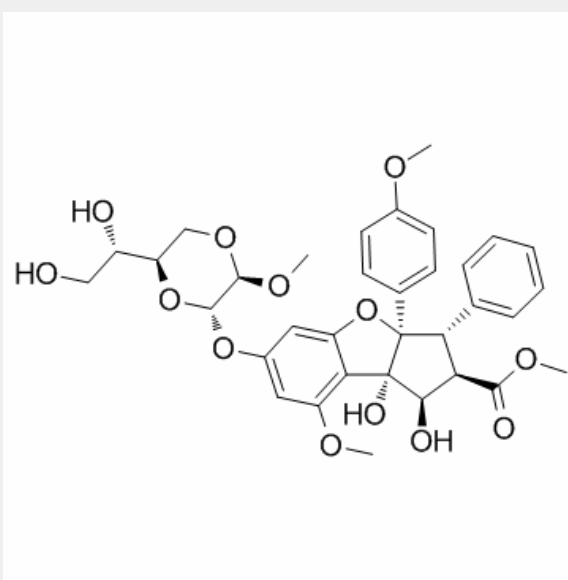
## Product Description

Episilvestrol is a derivative of silvestrol, isolated from the fruits and twigs of *Aglaia silvestris*, and is a specific **eIF4A**-targeting translation inhibitor, with antitumor activity.

IC50 & Target: eIF4A<sup>[1]</sup>

**In Vitro:** Episilvestrol is a specific eIF4A-targeting translation inhibitor, with antitumor activity<sup>[1]</sup>. Episilvestrol is cytotoxic activity

against several human cancer cell lines, such as Lu1, LNCaP, MCF-7 and HUVEC cells, with ED<sub>50</sub>s of 3.8, 3.8, 5.5 and 15.3 nM, respectively<sup>[2]</sup>. The GI<sub>50</sub>s of Episilvestrol against the cell proliferation of NCI-H460 and MCF-7 cells are 17.96 nM and 17.96 nM after first test and 15.6 nM and 18.7 nM after 2 months via SRB assay. Episilvestrol also suppresses HK1 cells and EBV-positive C666.1 NPC cells<sup>[3]</sup>.



All products are for RESEARCH USE ONLY. Not for diagnostic & therapeutic purposes!