

Naphthoquine (phosphate)

Catalog No: tcsc0739



Available Sizes

Size: 10mg

Size: 50mg

Size: 100mg

Size: 500mg



Specifications

CAS No:

173531-58-3

Formula:

$C_{24}H_{34}ClN_3O_9P_2$

Pathway:

Anti-infection

Target:

Parasite

Purity / Grade:

>98%

Solubility:

DMSO :

Observed Molecular Weight:

605.94

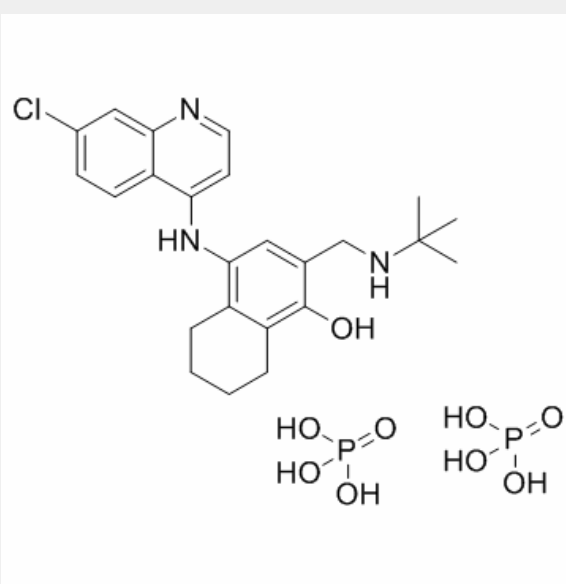
Product Description

Naphthoquine phosphate is antimalarial drug.

IC50 Value: N/A

Target: Antiparasitic

Naphthoquine phosphate and artemisinin are two antimalarials developed in China. Both drugs have proven to be efficacious and well tolerated as monotherapy as well as in combination in patients suffering from malaria. The Co-naphthoquine, a novel antimalarial combination, is an oral fixed combination tablet of the naphthoquine phosphate and artemisinin. Artemisinin is characterised by a rapid onset of schizonticidal action and a short half-life. Parasite clearance is, however, often incomplete when it is employed as a single agent unless high dosages are used over several days, but such a regimen may reduce patient compliance and increase the danger of toxicity. Naphthoquine phosphate, by contrast, has a slower onset of action and a longer half-life, associated with a low recrudescence rate.



All products are for RESEARCH USE ONLY. Not for diagnostic & therapeutic purposes!