

Nutlin (3b)

Catalog No: tcsc0727



Available Sizes

Size: 5mg

Size: 10mg

Size: 50mg



Specifications

CAS No:

675576-97-3

Formula:

$C_{30}H_{30}Cl_2N_4O_4$

Pathway:

Apoptosis

Target:

MDM-2/p53

Purity / Grade:

>98%

Solubility:

10 mM in DMSO

Alternative Names:

Nutlin-3b

Observed Molecular Weight:

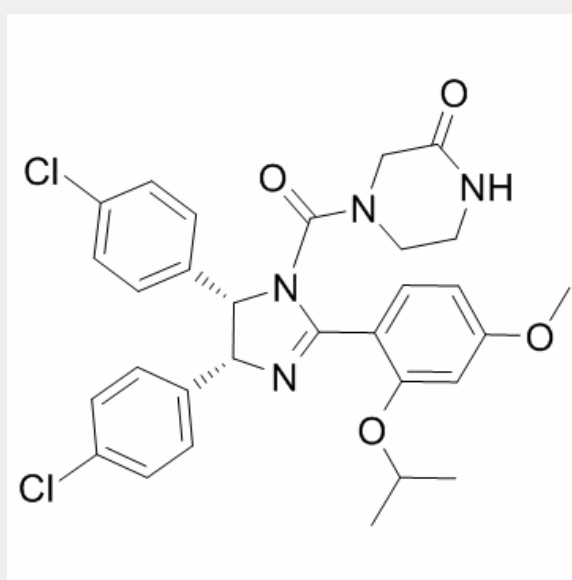
581.49

Product Description

Nutlin-3b is a MDM2/p53 antagonist or inhibitor with IC₅₀ of 13.6 μ M. Nutlin-3b is a less active enantiomer

IC₅₀ & Target: IC₅₀: 13.6 μ M (MDM2/p53)

In Vitro: Nutlin-3b is a 150-fold less potent (+)-enantiomer of Nutlin-3 as p53 MDM2 antagonist or inhibitor, in comparison with more potent opposite (-)-enantiomer Nutlin-3a. It is useful as a negative control for non-Mdm2 related cellular activities. Nutlin-3b is useful as a negative control s for non-MDM2-related cellular activities. Nutlin-3a induces the expression of MDM2 and p21 (but not p53) only in cells with wild-type p53. Nutlin-3b has no effect regardless of the p53 status of the cells. Only the active enantiomer Nutlin-3a shows a potent antiproliferative activity and clear separation of potency between the cells harboring wild-type p53 and those harboring mutant p53. The potency of Nutlin-3b is much lower in the wild-type p53 cells and nearly identical to the potency of Nutlin-3a against the mutant p53 cells. After 48 hours of exposure to the Nutlin-3a, 45% of the cell population became TUNEL positive, but cells treated with the Nutlin-3b are indistinguishable from the untreated controls.



All products are for RESEARCH USE ONLY. Not for diagnostic & therapeutic purposes!