

# EMD638683 (R-Form)

Catalog No: tcsc0659



## Available Sizes

Size: 5mg

Size: 10mg

Size: 50mg

Size: 100mg



## Specifications

**CAS No:**

1184940-47-3

**Formula:**

$C_{18}H_{18}F_2N_2O_4$

**Pathway:**

Metabolic Enzyme/Protease

**Target:**

SGK

**Purity / Grade:**

>98%

**Solubility:**

DMSO : 180 mg/mL (494.04 mM; Need ultrasonic and warming)

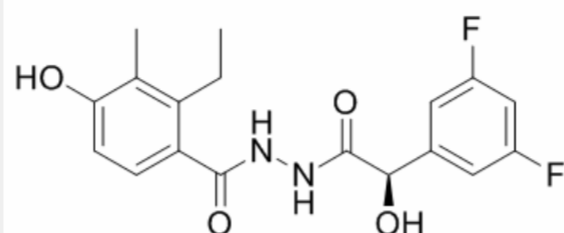
**Observed Molecular Weight:**

364.34

## Product Description

EMD638683 R-Form is the R-form of EMD638683. EMD638683 is a highly selective **SGK1** inhibitor with **IC<sub>50</sub>** of 3  $\mu$ M.

IC50 & Target: SGK1<sup>[1]</sup>



All products are for RESEARCH USE ONLY. Not for diagnostic & therapeutic purposes!