

# PSI-6206

Catalog No: tcsc0630



## Available Sizes

**Size:** 10mg

**Size:** 50mg

**Size:** 100mg



## Specifications

**CAS No:**

863329-66-2

**Formula:**

$C_{10}H_{13}FN_2O_5$

**Pathway:**

Anti-infection

**Target:**

HCV

**Purity / Grade:**

>98%

**Solubility:**

DMSO : 100 mg/mL (384.29 mM; Need ultrasonic)

**Alternative Names:**

RO 2433;GS-331007

**Observed Molecular Weight:**

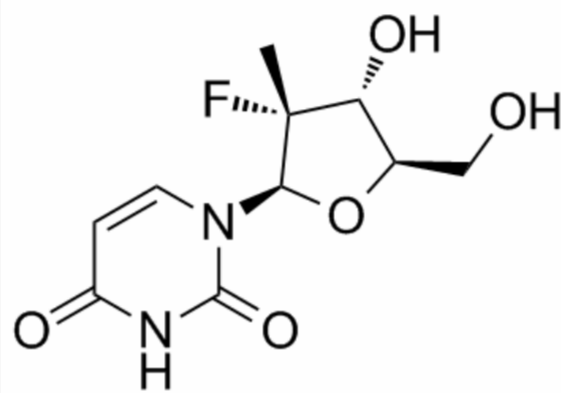
260.22

## Product Description

PSI-6206 is the deaminated derivative of PSI-6130, which is a potent and selective inhibitor of HCV NS5B polymerase. PSI-6206 low potently inhibits **HCV replicon** with **EC<sub>90</sub>** of >100  $\mu$ M.

IC50 & Target: EC90 >100  $\mu$ M (HCV replicon)<sup>[1]</sup>

**In Vitro:** PSI-6206 (RO2433) is tested for anti-HCV activity in both a cell-based quantitative real-time RT-PCR assay and surrogate bovine viral diarrhea virus (BVDV) assays. PSI-6206 demonstrates no activity or cytotoxicity in any assay<sup>[1]</sup>. The formation of the 5'-triphosphate (TP) of PSI-6130 (PSI-6130-TP) and RO2433 (RO2433-TP) increases with time and reached steady state levels at 48 h. RO2433-TP also inhibits RNA synthesis by the native HCV replicase isolated from HCV replicon cells and the recombinant HCV polymerase NS5B<sup>[2]</sup>. PSI-6206 (RO2433) is the deaminated derivative of PSI-6130, which is a potent and selective inhibitor of HCV NS5B polymerase<sup>[3]</sup>.



All products are for RESEARCH USE ONLY. Not for diagnostic & therapeutic purposes!