

# Ki16425

**Catalog No: tcsc0510**



## Available Sizes

**Size:** 5mg

**Size:** 10mg

**Size:** 50mg



## Specifications

**CAS No:**

355025-24-0

**Formula:**

$C_{23}H_{23}ClN_2O_5S$

**Pathway:**

GPCR/G Protein

**Target:**

LPL Receptor

**Purity / Grade:**

>98%

**Solubility:**

DMSO :  $\geq 100$  mg/mL (210.54 mM)

**Alternative Names:**

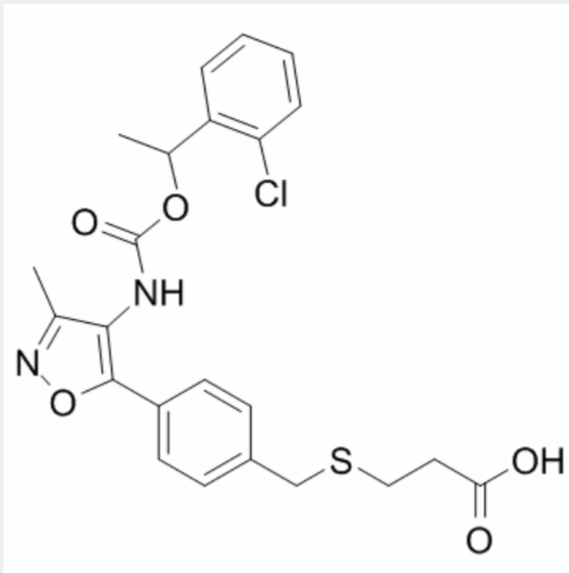
Debio 0719

**Observed Molecular Weight:**

474.96

## Product Description

Ki16425 (Debio 0719) is a subtype-selective, competitive antagonist of the EDG-family receptors, **LPA1** and **LPA3** with  $K_i$ s of 0.34  $\mu$ M and 0.93  $\mu$ M, respectively.



All products are for RESEARCH USE ONLY. Not for diagnostic & therapeutic purposes!