

Vinorelbine

Catalog No: tcsc0212



Available Sizes

Size: 10mg

Size: 50mg



Specifications

CAS No:

71486-22-1

Formula:

$C_{45}H_{54}N_4O_8$

Pathway:

Cell Cycle/DNA Damage;Cytoskeleton;Autophagy

Target:

Microtubule/Tubulin;Microtubule/Tubulin;Autophagy

Purity / Grade:

>98%

Solubility:

10 mM in DMSO

Alternative Names:

KW-2307 base

Observed Molecular Weight:

778.93

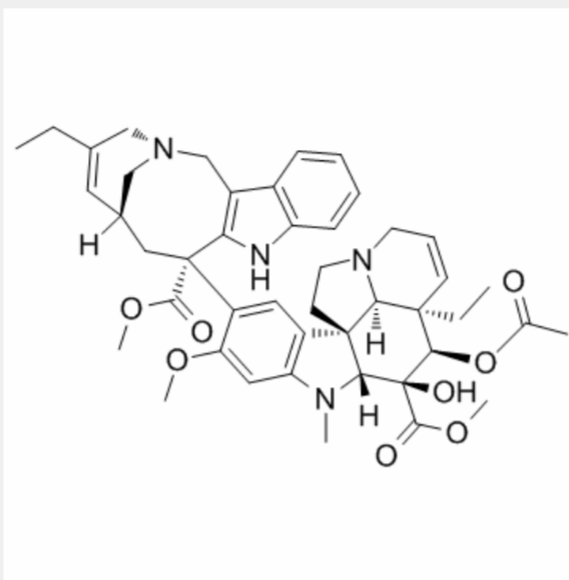
Product Description

Vinorelbine is an anti-mitotic agent which inhibits the proliferation of Hela cells with IC_{50} of 1.25 nM.

In Vitro:

Vinorelbine (0.5-5 nM) inhibits cell proliferation by 50% (IC_{50}) at concentrations of 1.25 nM. At concentration of 8 nM vinorelbine, no cells are in anaphase^[1]. Vinorelbine time-dependently induces the p53 and p21^{WAF1/CIP1} expression in androgen-dependent (AD) and- independent (AI) prostate cancer cell lines. Vinorelbine stimulates reporter genes in a concentration-dependent manner^[2].

In Vivo: After vinorelbine treatment, the first neutropenic episode occurred after the first (4 dogs), second (1), or sixth(1) vinorelbine treatment in the dogs^[3]. Vinorelbine is tolerated at a weekly interval in tumor-bearing cats, with an MTD of 11.5 mg/m²^[4].



All products are for RESEARCH USE ONLY. Not for diagnostic & therapeutic purposes!