

# Lyn-IN-1

**Catalog No: tcsc0191**



## Available Sizes

---

**Size:** 5mg

**Size:** 10mg

**Size:** 50mg

**Size:** 100mg



## Specifications

---

**CAS No:**

887650-05-7

**Formula:**

$C_{30}H_{31}F_3N_8O$

**Pathway:**

Protein Tyrosine Kinase/RTK

**Target:**

Bcr-Abl

**Purity / Grade:**

>98%

**Solubility:**

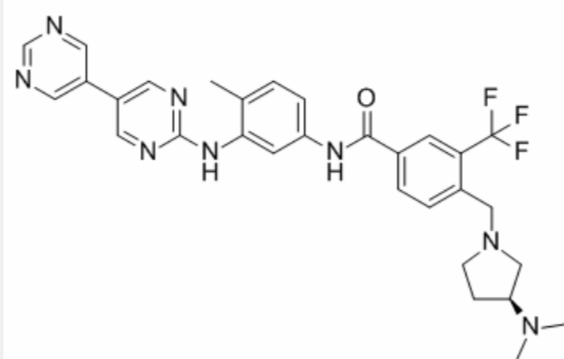
10 mM in DMSO

**Observed Molecular Weight:**

576.62

## Product Description

Lyn-IN-1 is a potent and selective dual Bcr-Abl/Lyn inhibitor, extracted from patent WO2014169128A1.



All products are for RESEARCH USE ONLY. Not for diagnostic & therapeutic purposes!