

# CCG-63808

**Catalog No: tcsc0041**



## Available Sizes

---

**Size:** 10mg

**Size:** 50mg



## Specifications

---

**CAS No:**

620113-73-7

**Formula:**

$C_{25}H_{15}FN_4O_2S$

**Pathway:**

GPCR/G Protein

**Target:**

RGS Protein

**Purity / Grade:**

>98%

**Solubility:**

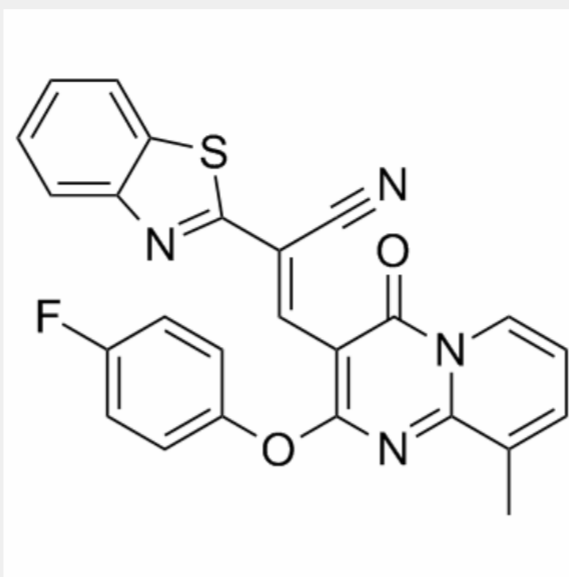
10 mM in DMSO

**Observed Molecular Weight:**

454.48

## Product Description

CCG-63808 is a reversible inhibitor of regulator of G-protein signaling (RGS) proteins.



All products are for RESEARCH USE ONLY. Not for diagnostic & therapeutic purposes!