

RGD Trifluoroacetate

Catalog No: tcsc0040825



Available Sizes

Size: 5mg

Size: 10mg

Size: 25mg

Size: 50mg

Size: 100mg



Specifications

Formula:

$C_{14}H_{23}F_3N_6O_8$

Pathway:

Cytoskeleton

Target:

Integrin

Purity / Grade:

>98%

Solubility:

H₂O : ≥ 60 mg/mL (130.33 mM)

Observed Molecular Weight:

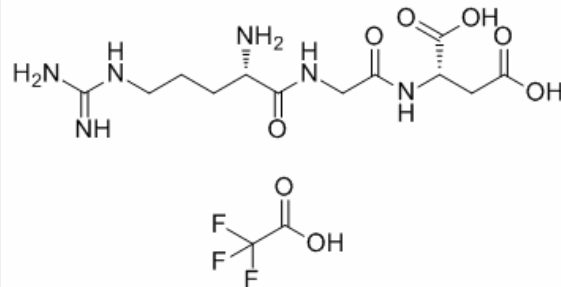
460.36

Product Description

RGD Trifluoroacetate is a tripeptide that effectively triggers cell adhesion, addresses certain cell lines and elicits specific cell responses; RGD Trifluoroacetate binds to **integrins**.

IC50 & Target: Integrin^[1]

In Vitro: RGD Trifluoroacetate is the most effective and most often employed peptide sequence for stimulated cell adhesion on synthetic surfaces. There are 24 integrins binding to ECM molecules in a RGD dependent manner: $\alpha 3\beta 1$, $\alpha 5\beta 1$, $\alpha 8\beta 1$, $\alpha \text{IIb}\beta 3$, $\alpha \nu \beta 1$, $\alpha \nu \beta 3$, $\alpha \nu \beta 5$, $\alpha \nu \beta 6$, $\alpha \nu \beta 8$, and to some extent $\alpha 2\beta 1$ and $\alpha 4\beta 1$ ^[1].



All products are for RESEARCH USE ONLY. Not for diagnostic & therapeutic purposes!