

Sultopride hydrochloride

Catalog No: tcsc0040603



Available Sizes

Size: 5mg

Size: 10mg

Size: 25mg

Size: 50mg



Specifications

CAS No:

23694-17-9

Formula:

$C_{17}H_{27}ClN_2O_4S$

Pathway:

GPCR/G Protein;Neuronal Signaling

Target:

Dopamine Receptor;Dopamine Receptor

Purity / Grade:

>98%

Solubility:

10 mM in DMSO

Alternative Names:

LIN-1418 hydrochloride

Observed Molecular Weight:

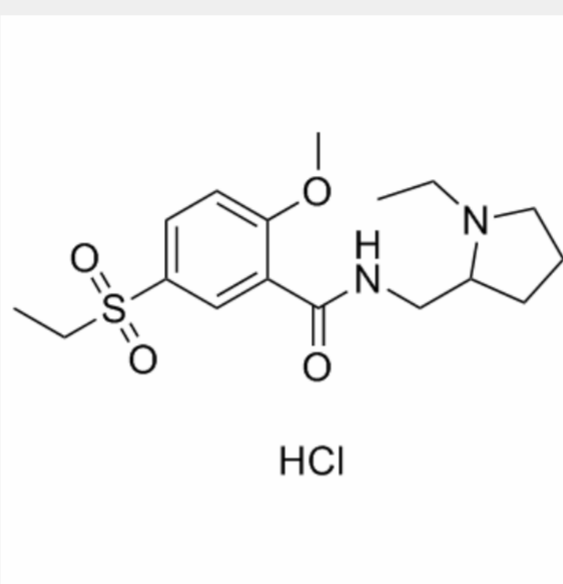
390.93

Product Description

Sultopride hydrochloride is a selective antagonist of **dopamine D2 receptor**.

IC50 & Target: Dopamine D2 receptor^[1]

In Vivo: Sultopride hydrochloride is a selective antagonist of dopamine D2 receptor. DOPAC and HVA levels in the striatum, the nucleus accumbens and the medial prefrontal cortex are higher in the rats treated with Sultopride hydrochloride and sulpiride than those of the controls. In the striatum, DOPAC and HVA levels are higher in the Sultopride hydrochloride-treated rats than the sulpiride-treated rats (p[1]).



All products are for RESEARCH USE ONLY. Not for diagnostic & therapeutic purposes!