

# CCG-63802

Catalog No: tcsc0040



## Available Sizes

**Size:** 5mg

**Size:** 10mg

**Size:** 50mg

**Size:** 100mg



## Specifications

**CAS No:**

620112-78-9

**Formula:**

$C_{26}H_{18}N_4O_2S$

**Pathway:**

GPCR/G Protein

**Target:**

RGS Protein

**Purity / Grade:**

>98%

**Solubility:**

DMSO : 1.67 mg/mL (3.71 mM; Need ultrasonic and warming)

**Observed Molecular Weight:**

450.51

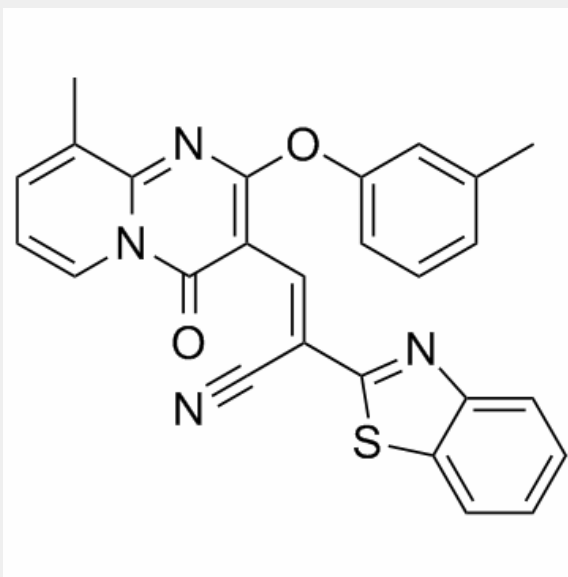
## Product Description

CCG-63802 is a reversible inhibitor of regulator of G-protein signaling (RGS) protein; with greatest potency at RGS4.

IC50 value:

Target: RGS

CCG-63802 is selective amongst RGS proteins, with greatest potency at RGS4. CCG-63802 inhibits GTPase accelerating protein activity of RGS4 and blocks its interaction with Gαo. Retains activity under reducing conditions.



All products are for RESEARCH USE ONLY. Not for diagnostic & therapeutic purposes!