

MK-7246 S enantiomer

Catalog No: tcsc0039327



Available Sizes

Size: 1mg

Size: 5mg



Specifications

Formula:

$C_{21}H_{21}FN_2O_4S$

Pathway:

GPCR/G Protein

Target:

Prostaglandin Receptor

Purity / Grade:

>98%

Solubility:

10 mM in DMSO

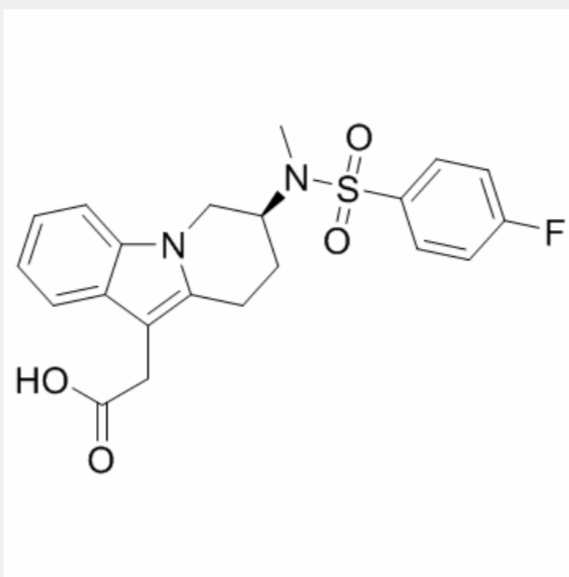
Observed Molecular Weight:

416.47

Product Description

MK-7246 S enantiomer is the less active enantiomer of MK-7246. MK-7246 is a potent and selective CRTH2 antagonist.

In Vitro: The affinity and selectivity of the MK-7246 are superior to the MK-7246 S enantiomer.



All products are for RESEARCH USE ONLY. Not for diagnostic & therapeutic purposes!