

# ATP-Red 1

Catalog No: tcsc0035407



## Available Sizes

**Size:** 5mg

**Size:** 10mg

**Size:** 25mg



## Specifications

**CAS No:**

1847485-97-5

**Formula:**

$C_{34}H_{36}BN_3O_4$

**Pathway:**

Others

**Target:**

Others

**Purity / Grade:**

>98%

**Solubility:**

10 mM in DMSO

**Observed Molecular Weight:**

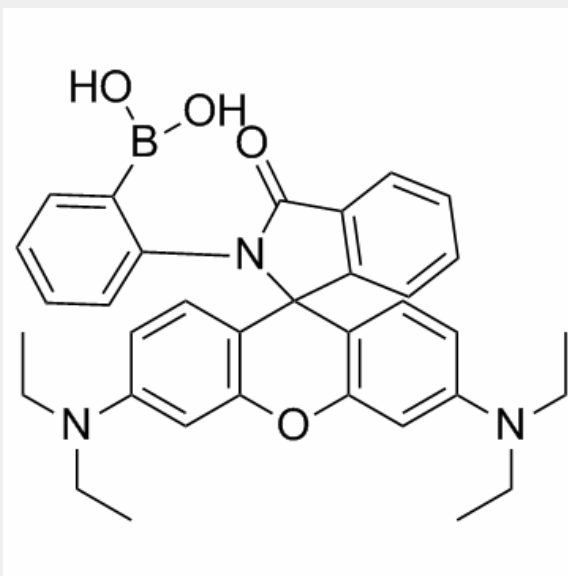
561.48

## Product Description

ATP-Red 1 is a multisite-binding switchable fluorescent probe, and can selectively and rapidly responds to intracellular concentrations of ATP in living cells.

***In Vitro:***

ATP-Red 1 is a multisite-binding switchable fluorescent probe, and can selectively and rapidly responds to intracellular concentrations of ATP in living cells. The maximum absorption and emission wavelength of are 570/566 nm and 590/585 nm. ATP-Red 1 has good membrane permeability, and in the presence of 5 mM ATP, the fluorescence intensity of ATP-Red 1 increases 5.6-fold. ATP-Red 1 (2.5  $\mu$ M, 20 min) shows much weaker fluorescence after KCN-induced inhibition of OXPHOS, which results in reduced mitochondrial ATP levels in OSCC cells<sup>[1]</sup>.



All products are for RESEARCH USE ONLY. Not for diagnostic & therapeutic purposes!