

GNE 220

Catalog No: **tcsc0035358**



Available Sizes

Size: 5mg

Size: 10mg

Size: 25mg



Specifications

CAS No:

1199590-75-4

Formula:

$C_{25}H_{26}N_8$

Pathway:

MAPK/ERK Pathway

Target:

MAP4K

Purity / Grade:

>98%

Solubility:

10 mM in DMSO

Observed Molecular Weight:

438.53

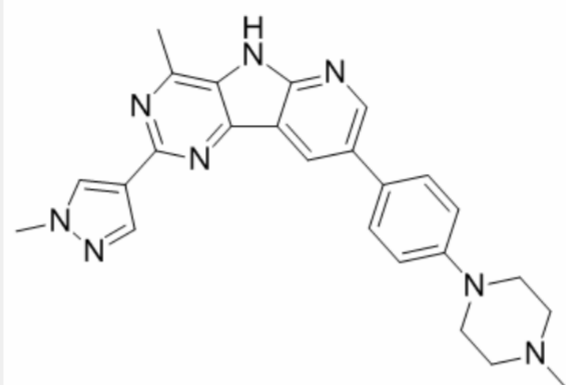
Product Description

GNE-220 is a potent and selective inhibitor of **MAP4K4** with an **IC₅₀** of 7 nM.

IC50 & Target: IC50: 7 nM (MAP4K4), 9 nM (MINK/MAP4K6), 476 nM (DMPK), 1.06 μM (MELK), 1.1 μM (KHS1/MAP4K5), 1.13 μM (TBK1),

2.02 μM (Flt3), 2.06 μM (Rse)^[1]

In Vitro: GNE-220 also inhibits a few other kinases with IC_{50} s of 9 nM, 476 nM and 1.1 μM for MINK (MAP4K6), DMPK and KHS1 (MAP4K5), respectively. GNE-220 alters human umbilical vein endothelial cells (HUVEC) sprout morphology. GNE-220 also reduces ρERM^+ retraction fibres in a dose-dependent manner. GNE-220 also dose-dependently increased the number of active-INT β 1⁺ long focal adhesions (FAs)^[1].



All products are for RESEARCH USE ONLY. Not for diagnostic & therapeutic purposes!