

# Methiothepin mesylate

Catalog No: tcsc0030713



## Available Sizes

Size: 10mg



## Specifications

### CAS No:

74611-28-2

### Formula:

$C_{21}H_{28}N_2O_3S_3$

### Pathway:

Neuronal Signaling;GPCR/G Protein

### Target:

5-HT Receptor;5-HT Receptor

### Purity / Grade:

>98%

### Solubility:

DMSO :  $\geq 125$  mg/mL (276.15 mM)

### Alternative Names:

Metitepine mesylate;Ro 8-6837 mesylate

### Observed Molecular Weight:

452.65

## Product Description

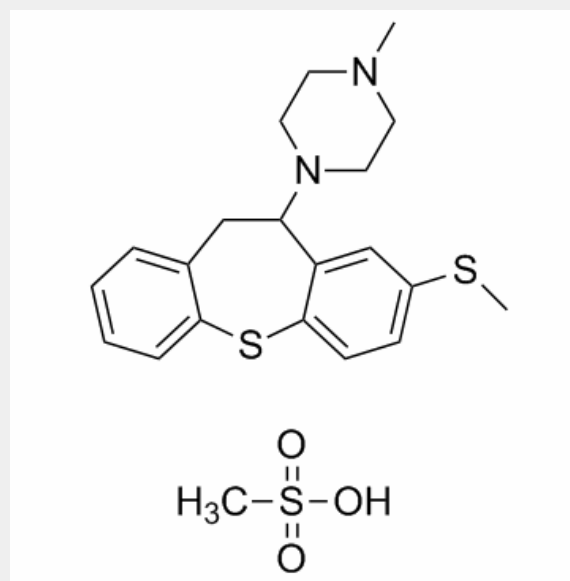
Methiothepin mesylate is a potent and non-selective **5-HT<sub>2</sub> receptor** antagonist, with pK<sub>d</sub>s of 7.10 (5-HT<sub>1A</sub>), 7.28 (5HT<sub>1B</sub>), 7.56 (5HT<sub>1C</sub>), 6.99 (5HT<sub>1D</sub>), 7.0 (5-HT<sub>5A</sub>), 7.8 (5-HT<sub>5B</sub>), 8.74 (5-HT<sub>6</sub>), and 8.99 (5-HT<sub>7</sub>), and pK<sub>i</sub>s of 8.50 (5HT<sub>2A</sub>), 8.68 (5HT<sub>2B</sub>), and 8.35 (5HT<sub>2C</sub>).

IC50 & Target: pKd: 7.10 (5-HT<sub>1A</sub>), 7.28 (5HT<sub>1B</sub>), 7.56 (5HT<sub>1C</sub>), 6.99 (5HT<sub>1D</sub>)<sup>[1]</sup>, 7.0 (5-HT<sub>5A</sub>), 7.8 (5-HT<sub>5B</sub>), 8.74 (5-HT<sub>6</sub>), 8.99 (5-HT<sub>7</sub>)

[3]

pK<sub>i</sub>: 8.50 (5-HT<sub>2A</sub>), 8.68 (5-HT<sub>2B</sub>), 8.35 (5-HT<sub>2C</sub>)<sup>[2]</sup>

***In Vitro:*** Methiothepin mesylate is a 5-HT receptor antagonist, with pK<sub>d</sub>s of 7.10, 7.28, 7.56, and 6.99 for 5-HT<sub>1A</sub>, 5HT<sub>1B</sub>, 5HT<sub>1C</sub>, 5HT<sub>1D</sub><sup>[1]</sup>. Methiothepin mesylate also shows pK<sub>d</sub>s of 7.0, 7.8, 8.74, and 8.99 for 5-HT<sub>5A</sub>, 5-HT<sub>5B</sub>, 5-HT<sub>6</sub>, and 5-HT<sub>7</sub>, respectively<sup>[2]</sup>. Methiothepin exhibits high affinity at 5-HT<sub>2A</sub>, 5HT<sub>2B</sub>, and 5HT<sub>2C</sub> with pK<sub>i</sub>s of 8.50, 8.68, and 8.35, respectively<sup>[3]</sup>.



All products are for RESEARCH USE ONLY. Not for diagnostic & therapeutic purposes!