

## CU CPT 22

Catalog No: **tcsc0028870**



### Available Sizes

**Size:** 5mg

**Size:** 10mg

**Size:** 25mg



### Specifications

**CAS No:**

1416324-85-0

**Formula:**

$C_{19}H_{22}O_7$

**Pathway:**

Immunology/Inflammation

**Target:**

Toll-like Receptor (TLR)

**Purity / Grade:**

>98%

**Solubility:**

DMSO :  $\geq 125$  mg/mL (344.95 mM)

**Observed Molecular Weight:**

362.37

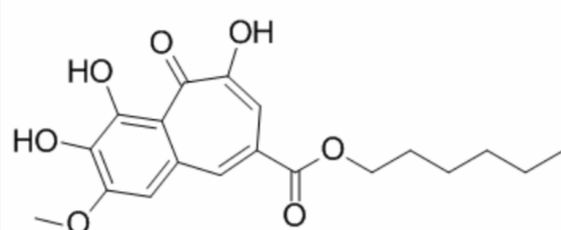
### Product Description

CU CPT 22 is a toll-like receptor 1 and 2 (**TLR1/2**) inhibitor with an **IC<sub>50</sub>** of 0.58  $\mu$ M.

IC50 & Target: IC50: 0.58  $\mu$ M (TLR1/2)<sup>[1]</sup>

**In Vitro:**

CU CPT 22 is a toll-like receptor 1 and 2 (TLR1/2) inhibitor with an  $IC_{50}$  of  $0.58 \pm 0.09 \mu\text{M}$ . It is demonstrated that CU CPT 22 is able to compete with Pam<sub>3</sub>CSK<sub>4</sub> for binding to TLR1/2 with an inhibition constant ( $K_i$ ) of  $0.41 \pm 0.07 \mu\text{M}$ , which is consistent with its potency observed in the whole cell assay. Increasing the concentration of CU CPT 22 to  $6 \mu\text{M}$  decreases the anisotropy to background levels. It is found that CU CPT 22 inhibits TLR1/2 signaling without affecting other TLRs, showing it is highly selective in intact cells. CU CPT 22 is found to have no significant cytotoxicity at various concentrations up to  $100 \mu\text{M}$  in RAW 264.7 cells. The result demonstrates that CU CPT 22 can inhibit about 60% of TNF- $\alpha$  and 95% of IL-1 $\beta$  at  $8 \mu\text{M}$ <sup>[1]</sup>.



All products are for RESEARCH USE ONLY. Not for diagnostic & therapeutic purposes!