

DADLE

Catalog No: tcsc0025794



Available Sizes

Size: 5mg

Size: 10mg

Size: 25mg



Specifications

CAS No:

63631-40-3

Formula:

$C_{29}H_{39}N_5O_7$

Pathway:

GPCR/G Protein; Neuronal Signaling

Target:

Opioid Receptor; Opioid Receptor

Purity / Grade:

>98%

Solubility:

DMSO: ≥ 300 mg/mL

Alternative Names:

[D-Ala2, D-Leu5]-Enkephalin

Observed Molecular Weight:

569.65

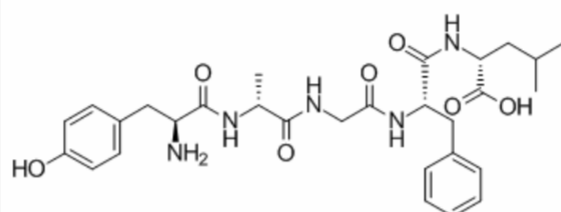
Product Description

DADLE ([D-Ala², D-Leu⁵]-Enkephalin) is a water soluble **Opioid Receptor** peptide agonist.

IC₅₀ & Target: Opioid Receptor^[1]

In Vitro: DADLE significantly inhibits cellular transcription in SH-SY5Y cells without causing cell injury. Following recovery for 72 h without DADLE in primary neurons, the transcriptional activity fully resumes^[1].

In Vivo: DADLE protects against I-R injury in hepatocytes, but not in the sinusoidal endothelial cells of the liver in rats. GPT levels are significantly lower in the DADLE group as compared to those of the Control group, but the serum levels of HA are not different between the two groups. The concentrations of MDA of the liver tissue are significantly lower in the DADLE group than in the Control group^[2]. DADLE-induced analgesia is mediated by the stimulation of both mu- and delta-opioid receptors^[3].



All products are for RESEARCH USE ONLY. Not for diagnostic & therapeutic purposes!