

(±) -WS75624B

Catalog No: tcsc0018463



Available Sizes

Size: 1mg

Size: 5mg

Size: 10mg



Specifications

CAS No:
188048-45-5

Formula:
 $C_{18}H_{24}N_2O_5S$

Pathway:
Others

Target:
Others

Purity / Grade:
>98%

Solubility:
10 mM in DMSO

Observed Molecular Weight:
380.46

Product Description

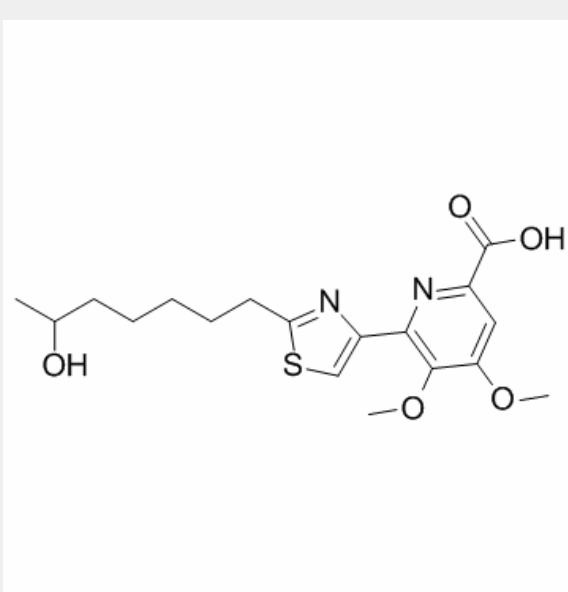
(±)-WS75624B is an **endothelin converting enzyme (ECE)** inhibitor with an **IC₅₀** of 0.03 µg/mL.

IC50 & Target: IC50: 0.03 µg/mL (ECE)^[1]

In Vitro:

Endothelin converting enzyme (ECE) inhibitors, WS75624A and (±)-WS75624B, have been isolated from the fermentation broth of *Saccharothrix* sp. No. 75624. WS75624A and (±)-WS75624B show highly potent ECE inhibitory activity, and both have IC_{50} s of 0.03 μ g/mL. WS75624A and (±)-WS75624B also show other metalloprotease (collagenase and neutral endopeptidase) inhibitory activity with IC_{50} s of 1 μ g/mL. (±)-WS75624B markedly inhibits ECE activity with an IC_{50} value of 0.03 μ g/mL, while it weakly inhibits collagenase and NEP activities with IC_{50} s of 1.0 μ g/mL and 1.25 μ g/mL, respectively^[1].

In Vivo: (±)-WS75624B inhibits big endothelin-induced pressor effect when administered to SD rat intravenously with big ET-1. WS75624 B (30 mg/kg) markedly attenuates the hypertensive effect of big ET-1 (1 nmol/kg, iv) by inhibiting the conversion of big ET-1 to ET-1^[1].



All products are for RESEARCH USE ONLY. Not for diagnostic & therapeutic purposes!