

ICI 153110

Catalog No: tcsc0018390



Available Sizes

Size: 1mg

Size: 5mg

Size: 10mg



Specifications

CAS No:

87164-90-7

Formula:

$C_{11}H_{11}N_3O$

Pathway:

Metabolic Enzyme/Protease

Target:

Phosphodiesterase (PDE)

Purity / Grade:

>98%

Solubility:

10 mM in DMSO

Observed Molecular Weight:

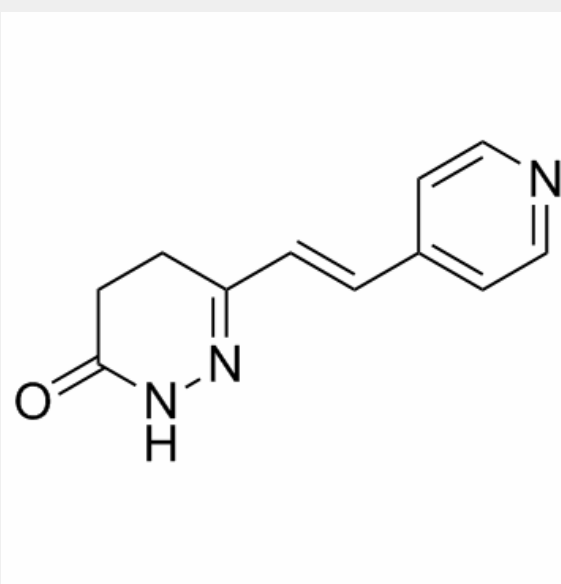
201.22

Product Description

ICI 153110 is an orally active **phosphodiesterase** inhibitor with both vasodilating and inotropic properties which is designed for the treatment of congestive cardiac failure.

IC50 & Target: Phosphodiesterase^[1]

In Vivo: ICI 153110 is an orally active phosphodiesterase inhibitor with both vasodilating and inotropic properties which is designed for the treatment of congestive cardiac failure. Fourteen animals have died as a direct or indirect consequence of ICI 153110 administration in the high-dose main test and reversibility groups. In the female rat dosed at 10 mg/kg/day ICI 153110 a mild focal arteritis is characterized by a predominantly and diffusely adventitial infiltration of mixed cells and early formation of fibrous tissue. The two rats dosed at 250 mg/kg/day ICI 153110 die prematurely from intratracheal intubation of dosing solution. Arteries from two further animals (dosed at 5 and 250 mg/kg/day ICI 153110) show minimal focal arteritis with medial necrosis, and medial and adventitial inflammation^[1].



All products are for RESEARCH USE ONLY. Not for diagnostic & therapeutic purposes!