

# Pumaprazole

Catalog No: tcsc0014963



## Available Sizes

**Size:** 1mg

**Size:** 5mg

**Size:** 10mg



## Specifications

**CAS No:**

158364-59-1

**Formula:**

$C_{19}H_{22}N_4O_2$

**Pathway:**

Membrane Transporter/Ion Channel

**Target:**

Proton Pump

**Purity / Grade:**

>98%

**Solubility:**

10 mM in DMSO

**Alternative Names:**

BY-841

**Observed Molecular Weight:**

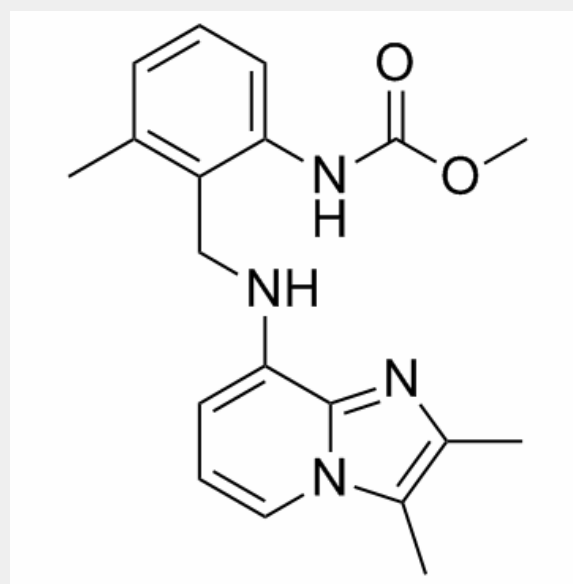
338.4

## Product Description

Pumaprazole is a reversible **proton pump** antagonist.

IC50 & Target: proton pump<sup>[1]</sup>

**In Vivo:** Pumaprazole is a reversible proton pump antagonist. Basal acid secretion in the Ghosh-Schild rat is inhibited by Pumaprazole with a higher efficacy compare to ranitidine. Pumaprazole displays identical ID<sub>50</sub> values on day 1 (11 µmol/kg, 95% confidence limits of 5 and 23) and on day 7 (10 µmol/kg, 95% confidence limits of 4 and 23) of a repeated dose study in this model. The lower dose of Pumaprazole (27 µmol/kg) rapidly elevates luminal pH up to almost neutrality, the higher dose (54 µmol/kg) further prolongs this pH-elevating effect<sup>[1]</sup>.



All products are for RESEARCH USE ONLY. Not for diagnostic & therapeutic purposes!