

Polyclonal Antibody to Serine Hydroxymethyltransferase 2, Mitochondrial (SHMT2)

Catalog No: tcua1884



Available Sizes

Size: 20ul

Size: 100ul

Size: 200ul



Specifications

Application:

WB; IHC; ICC; IP.

Species Reactivity:

Homo sapiens (Human)

Host Species:

Rabbit

Immunogen / Amino acids:

Recombinant Serine Hydroxymethyltransferase 2, Mitochondrial (SHMT2)

Conjugation:

Unconjugated

Clonality:

Polyclonal

Form:

Liquid

Storage Buffer:

0.01M PBS, pH7.4, containing 0.05% Proclin-300, 50% glycerol.

Recommended Dilution:

Western blotting: 0.5-2ug/ml

Immunocytochemistry in formalin fixed cells: 5-20ug/ml

Immunohistochemistry in formalin fixed frozen section: 5-20ug/ml

Immunohistochemistry in paraffin section: 5-20ug/ml

Enzyme-linked

Alternative Names:

Serine methylase; Glycine hydroxymethyltransferase

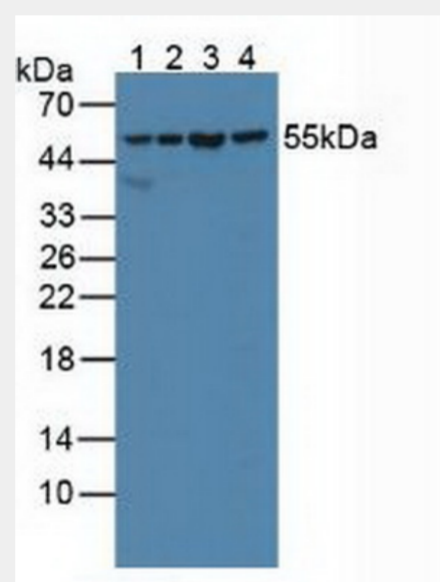


Figure. Western Blot; Sample: Lane1: Human Lung Tissue; Lane2: Human 293T Cells; Lane3: Human Hela Cells; Lane4: Porcine Pancreas Tissue.)

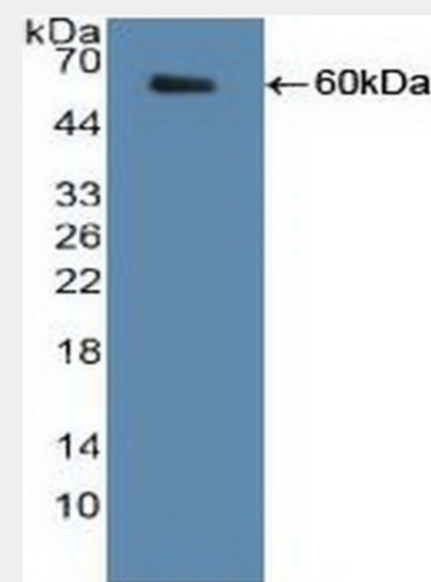


Figure. Western Blot; Sample: Recombinant SHMT2, Human.)

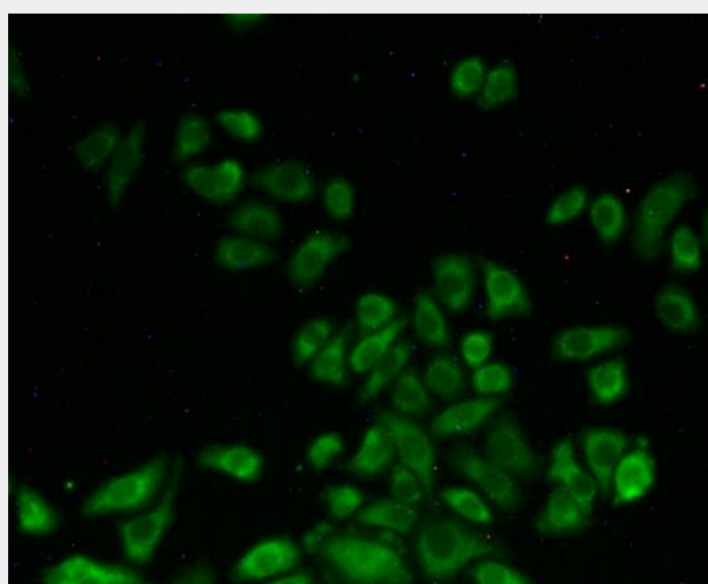


Figure:FITC staining on IHC-P
Simple: Hela cells)

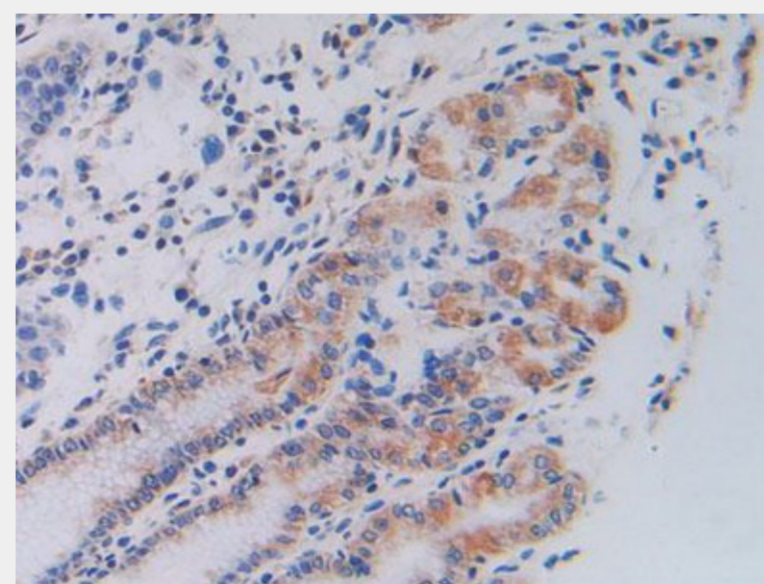


Figure. DAB staining on IHC-P; Samples: Human Stomach Tissue.)

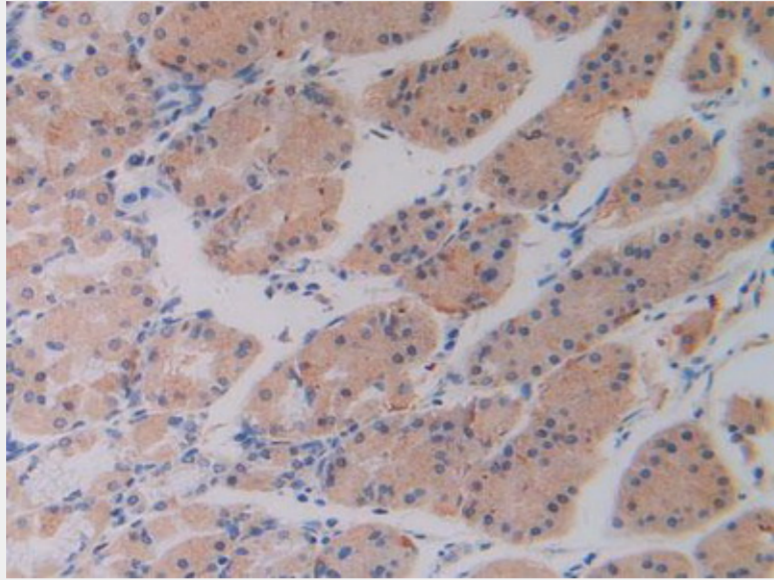


Figure. DAB staining on IHC-P; Samples: Human Stomach Cancer Tissue.)

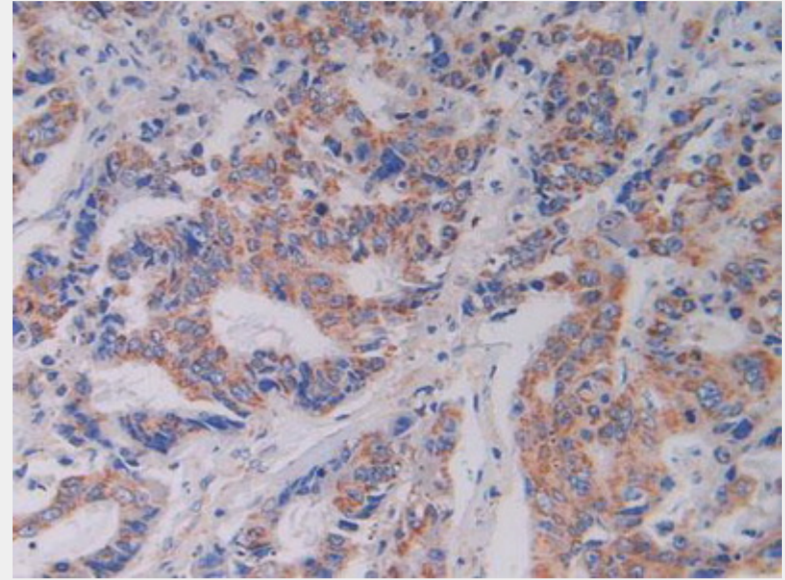


Figure. DAB staining on IHC-P; Samples: Human Rectum Cancer Tissue.)

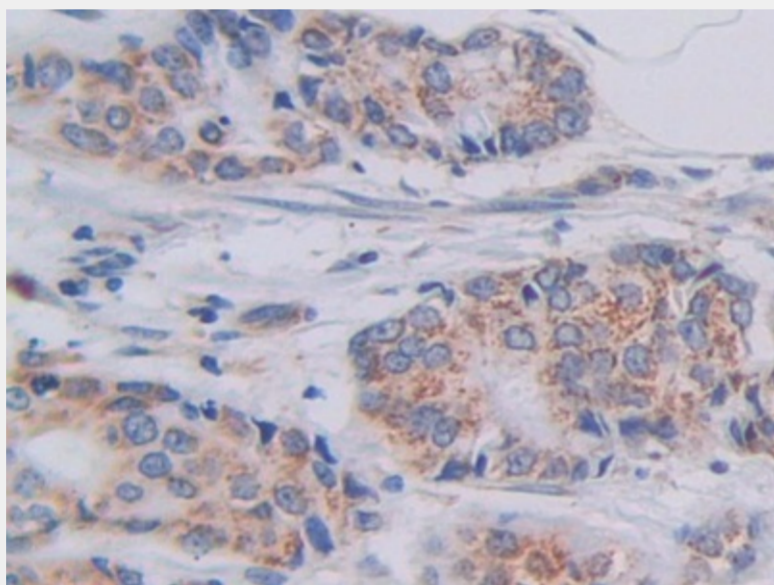


Figure. DAB staining on IHC-P; Samples: Human Breast Cancer Tissue.)

All products are for RESEARCH USE ONLY. Not for diagnostic & therapeutic purposes!