

# Polyclonal Antibody to SHC Transforming Protein 3 (SHC3)

Catalog No: tcua1755



## Available Sizes

---

**Size:** 20ul

**Size:** 100ul

**Size:** 200ul



## Specifications

---

**Application:**

WB; IHC; ICC; IP.

**Species Reactivity:**

Homo sapiens (Human)

**Host Species:**

Rabbit

**Immunogen / Amino acids:**

Recombinant SHC Transforming Protein 3 (SHC3)

**Conjugation:**

Unconjugated

**Clonality:**

Polyclonal

**Form:**

Liquid

**Storage Buffer:**

0.01M PBS, pH7.4, containing 0.05% Proclin-300, 50% glycerol.

**Recommended Dilution:**

Western blotting: 0.5-2ug/ml

Immunocytochemistry in formalin fixed cells: 5-20ug/ml

Immunohistochemistry in formalin fixed frozen section: 5-20ug/ml

Immunohistochemistry in paraffin section: 5-20ug/ml

Enzyme-linked

**Alternative Names:**

N-Shc; NSHC; SHCC; Neuronal Shc; Protein Rai; SHC-transforming protein C; Src homology 2 domain-containing-transforming protein C3

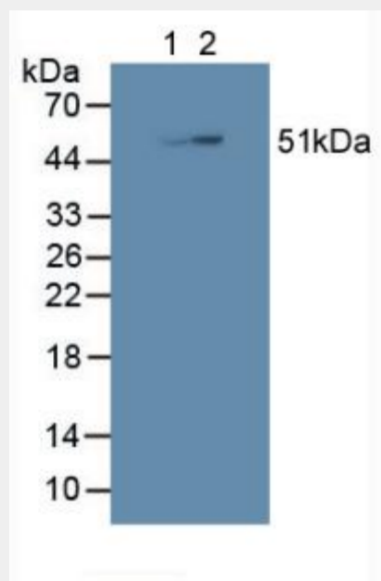


Figure. Western Blot; Sample: Lane1: Porcine Brain Tissue; Lane2: Human HepG2 Cells.)

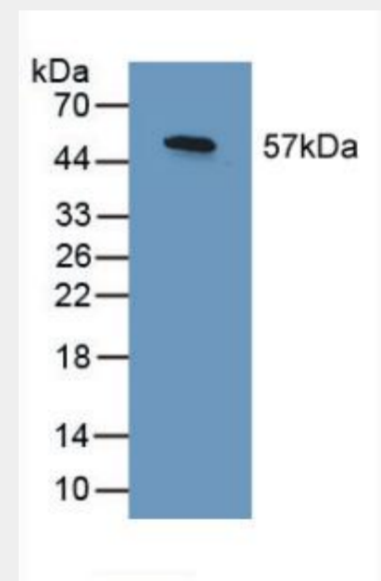


Figure. Western Blot; Sample: Recombinant SHC3, Human.)

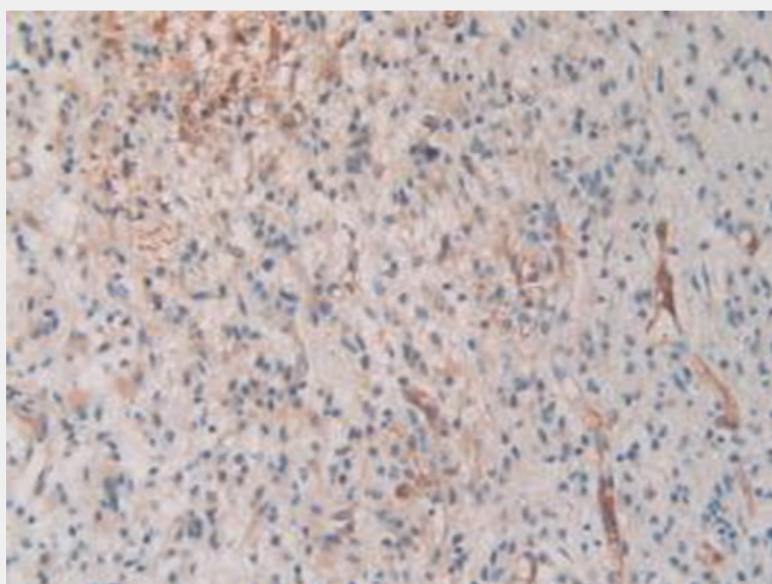


Figure. DAB staining on IHC-P; Samples: Human Glioma Tissue.)

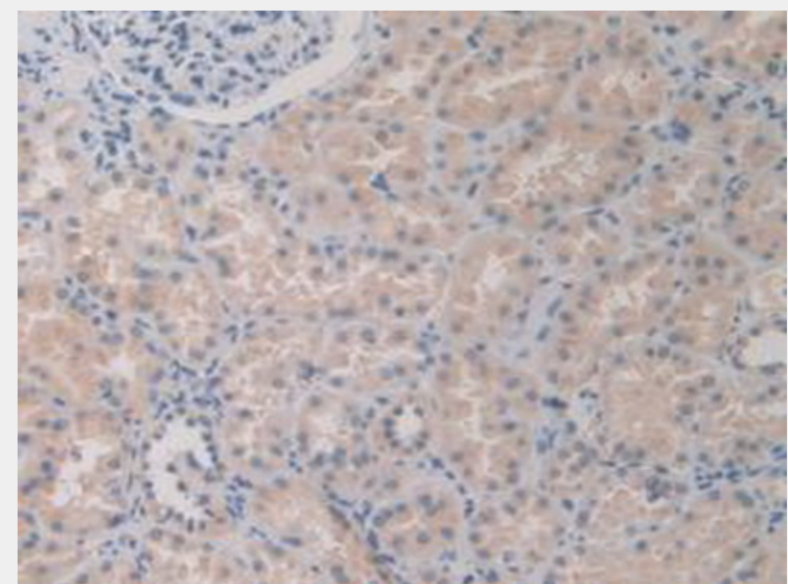


Figure. DAB staining on IHC-P; Samples: Human Kidney Tissue.)

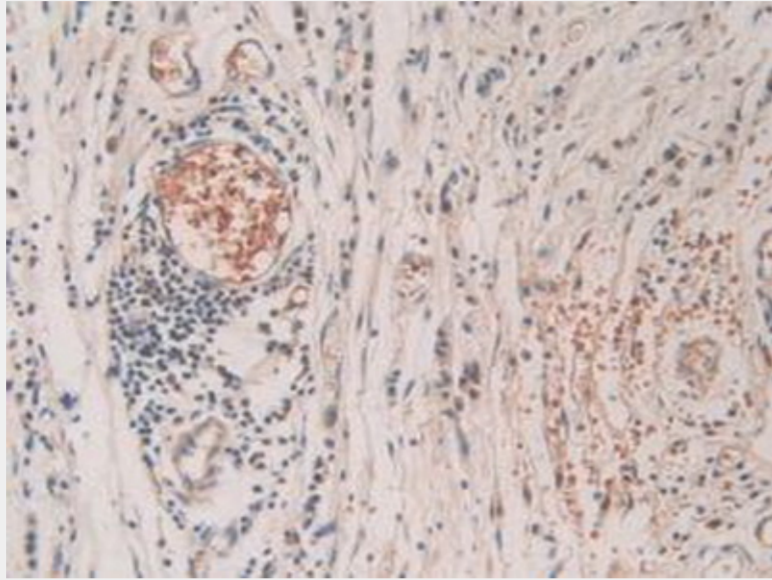


Figure. DAB staining on IHC-P;  
Samples: Human Stomach Cancer Tissue.)

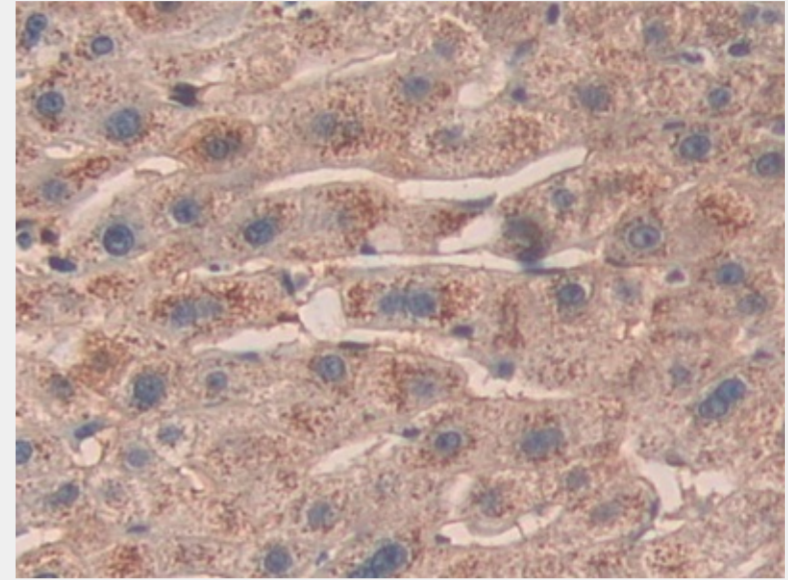


Figure. DAB staining on IHC-P; Samples: Human Liver Tissue.)

All products are for RESEARCH USE ONLY. Not for diagnostic & therapeutic purposes!