

Active Aldehyde Dehydrogenase 1 Family, Member A1 (ALDH1A1)

Catalog No: tcup9225



Available Sizes

Size: 10ug

Size: 50ug

Size: 200ug



Specifications

Application:

Cell culture; Activity Assays.

Species:

Homo sapiens (Human)

Source:

E. coli

Purity / Grade:

> 95%

Amino Acids:

Ser2~Ser501

SwissProt:

P00352

Predicted Molecular Weight:

58.4kDa

Observed Molecular Weight:

58kDa

Tags:

N-terminal His Tag

Product Description

-

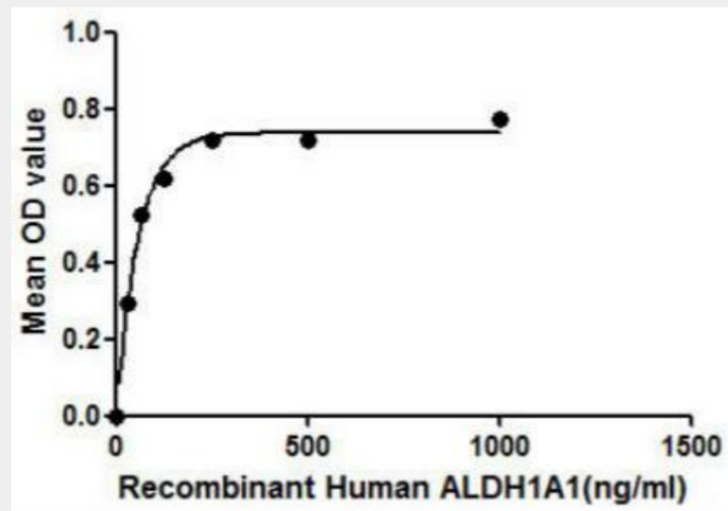
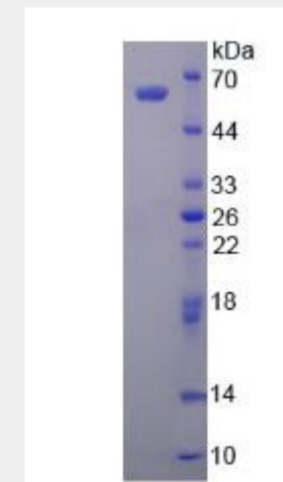


Figure 1. The binding activity of ALDH1A1 with IL21.



All products are for RESEARCH USE ONLY. Not for diagnostic & therapeutic purposes!