

Active Cytochrome P450 1A1 (CYP1A1)

Catalog No: tcup9222



Available Sizes

Size: 10ug

Size: 50ug

Size: 200ug



Specifications

Application:

Cell culture; Activity Assays.

Species:

Rattus norvegicus (Rat)

Source:

E. coli

Purity / Grade:

> 95%

Amino Acids:

Ser251~His521

SwissProt:

P00185

Predicted Molecular Weight:

61.5kDa

Observed Molecular Weight:

62kDa

Tags:

N-terminal His and GST Tag

Product Description

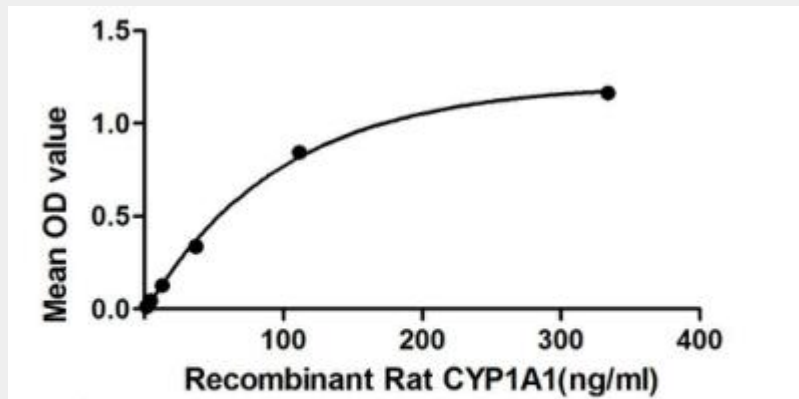
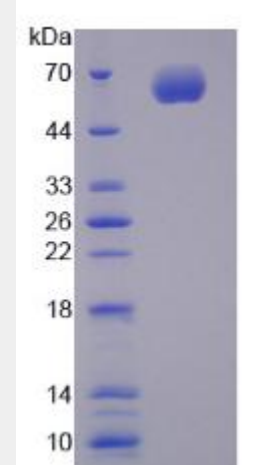


Figure 1. The binding activity of CYP1A1 with HSPA4



All products are for RESEARCH USE ONLY. Not for diagnostic & therapeutic purposes!