

Active Endothelial Cell Specific Molecule 1 (ESM1)

Catalog No: tcup9214



Available Sizes

Size: 10ug

Size: 50ug

Size: 200ug



Specifications

Application:

Cell culture; Activity Assays.

Species:

Homo sapiens (Human)

Source:

E. coli

Purity / Grade:

> 90%

Amino Acids:

Trp20~Arg184

SwissProt:

Q9NQ30

Predicted Molecular Weight:

19.4kDa

Observed Molecular Weight:

19kDa

Tags:

N-terminal His Tag

Product Description

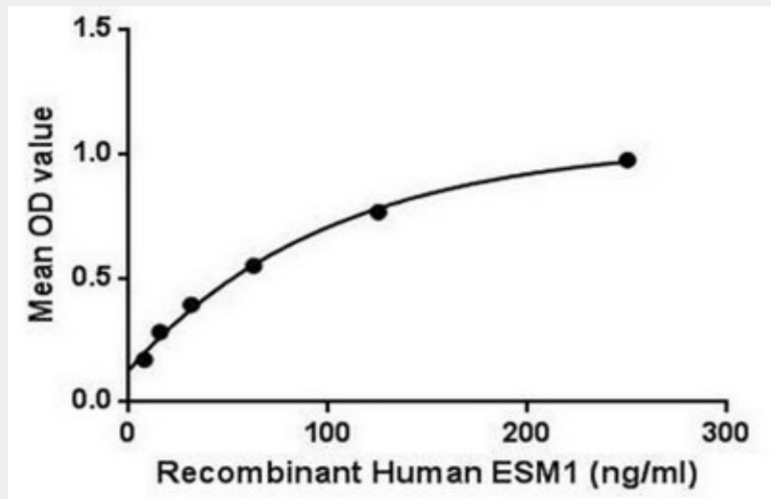
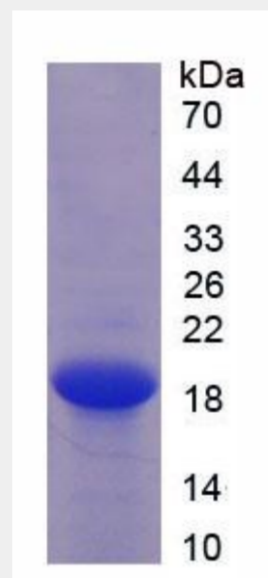
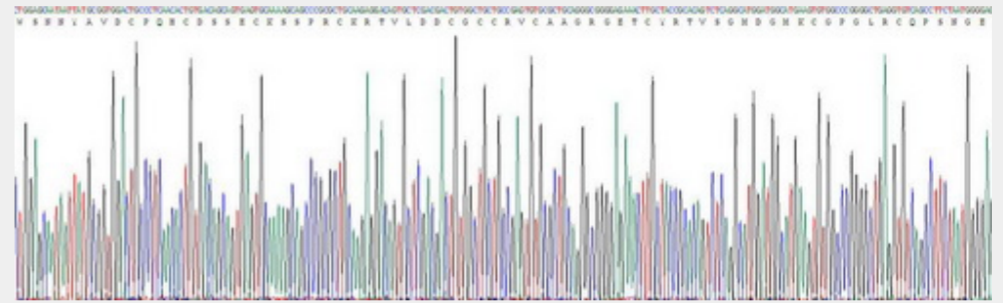


Figure 1. The binding activity of ESM1 with LFA1a.



All products are for RESEARCH USE ONLY. Not for diagnostic & therapeutic purposes!