

# Active Endothelin 1 (EDN1)

Catalog No: tcup9185



## Available Sizes

---

**Size:** 10ug

**Size:** 50ug

**Size:** 200ug



## Specifications

---

**Application:**

Cell culture; Activity Assays.

**Species:**

Rattus norvegicus (Rat)

**Source:**

E. coli

**Purity / Grade:**

> 95%

**Amino Acids:**

Ser54~His202

**SwissProt:**

P22388

**Predicted Molecular Weight:**

18.5kDa

**Observed Molecular Weight:**

19kDa

**Tags:**

N-terminal His Tag

## Product Description

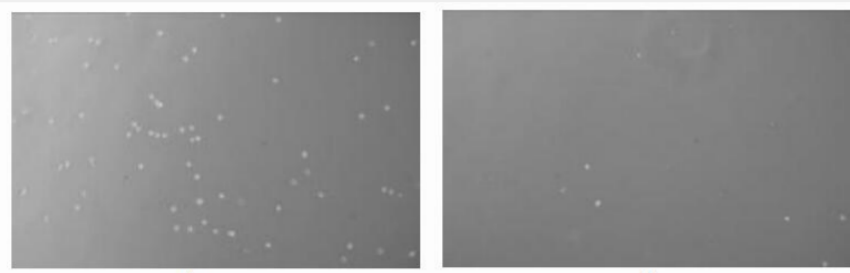


Figure 1. The chemotactic effect of EDN1 on THP1 cells.

(A) THP-1 cells were seeded into the upper chambers and serum free RPMI 1640 with 80ng/mL EDN1 was added in lower chamber, then cells in lower chamber were observed at low magnification ( $\times 100$ ) after incubation for 3h;

(B) THP-1 cells were seeded into the upper chambers and serum free RPMI 1640 without EDN1 was added in lower chamber, then cells in lower chamber were observed at low magnification ( $\times 100$ ) after incubation for 3h.

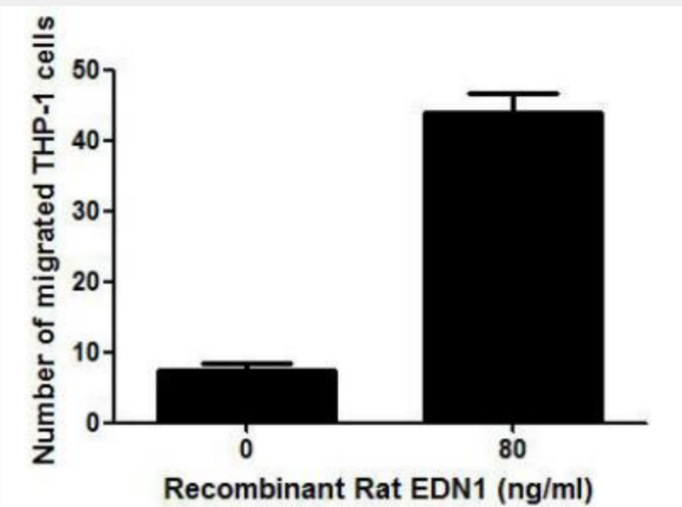
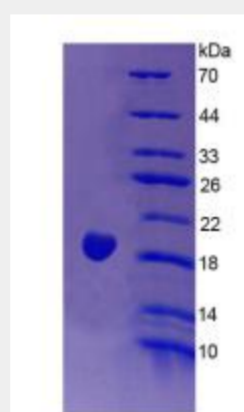


Figure 2. The chemotactic effect of EDN1 on THP-1 cells.



All products are for RESEARCH USE ONLY. Not for diagnostic & therapeutic purposes!