

Active Stromal Cell Derived Factor 1 (SDF1)

Catalog No: **tcup9175**



Available Sizes

Size: 10ug

Size: 50ug

Size: 200ug



Specifications

Application:

Cell culture; Activity Assays.

Species:

Homo sapiens (Human)

Source:

E. coli

Purity / Grade:

> 97%

Amino Acids:

Pro23~Lys89

SwissProt:

P48061

Predicted Molecular Weight:

37.8kDa

Observed Molecular Weight:

40kDa

Tags:

N-terminal His and GST Tag

Product Description

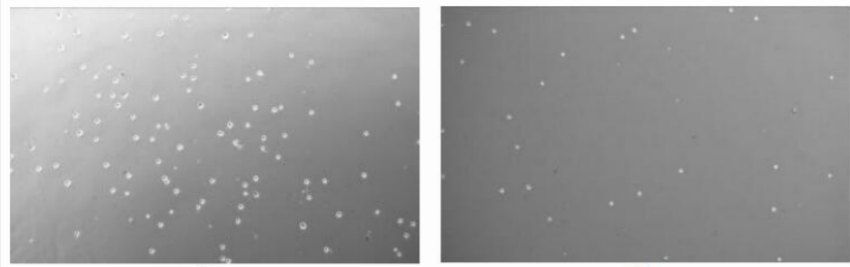


Figure 1. The chemotactic effect of SDF1 on THP1 cells.

(A) THP-1 cells were seeded into the upper chambers and serum free RPMI 1640 with 10ng/mL SDF1 was added in lower chamber, then cells in lower chamber were observed at low magnification ($\times 100$) after incubation for 3h;

(B) THP-1 cells were seeded into the upper chambers and serum free RPMI 1640 without SDF1 was added in lower chamber, then cells in lower chamber were observed at low magnification ($\times 100$) after incubation for 3h.

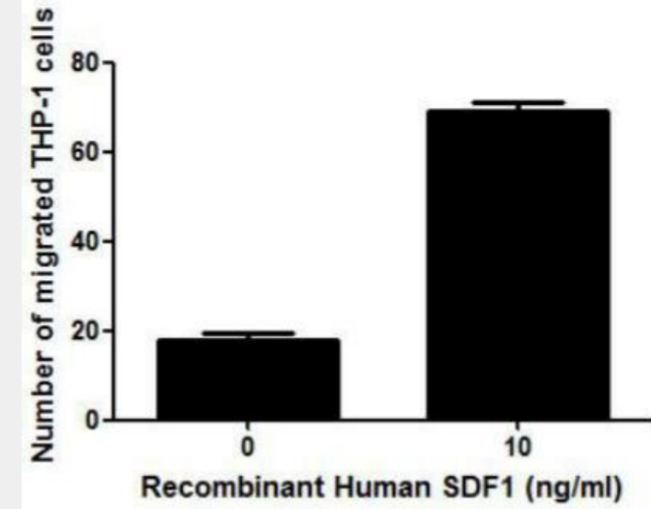
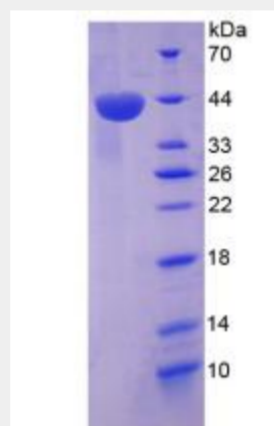


Figure 2. The chemotactic effect of SDF1 on THP-1 cells



All products are for RESEARCH USE ONLY. Not for diagnostic & therapeutic purposes!