

Active Leukemia Inhibitory Factor (LIF)

Catalog No: **tcup9171**



Available Sizes

Size: 10ug

Size: 50ug

Size: 200ug



Specifications

Application:

Cell culture; Activity Assays.

Species:

Homo sapiens (Human)

Source:

E. coli

Purity / Grade:

> 95%

Amino Acids:

Lys2~Ala201

SwissProt:

P15018

Predicted Molecular Weight:

25.4kDa

Observed Molecular Weight:

26kDa

Tags:

N-terminal His Tag

Product Description



Figure 1. Cell proliferation of TF-1 cells after stimulated with SCF.

- (A) TF-1 cells cultured in RPMI-1640, stimulated with 1ng/mL LIF for 72h;
(B) Unstimulated TF-1 cells cultured in RPMI-1640 for 72h.

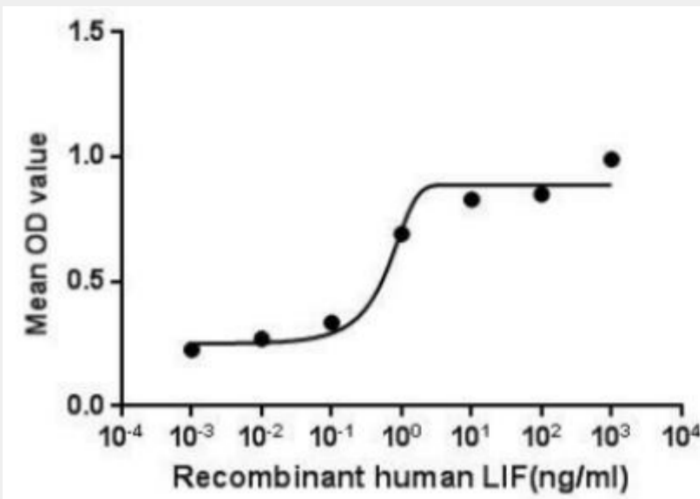
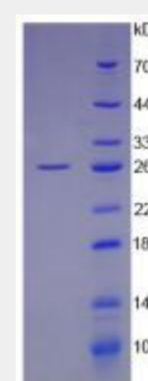
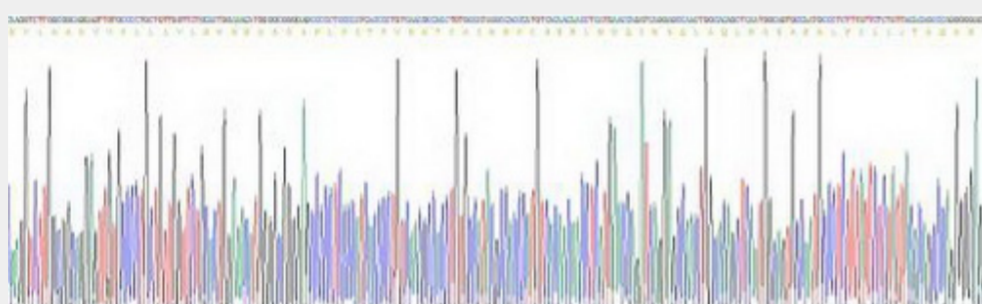


Figure 2. The dose-effect curve of LIF.



All products are for RESEARCH USE ONLY. Not for diagnostic & therapeutic purposes!