

Active Leptin (LEP)

Catalog No: **tcup9170**



Available Sizes

Size: 10ug

Size: 50ug

Size: 200ug



Specifications

Application:

Cell culture; Activity Assays.

Species:

Homo sapiens (Human)

Source:

E. coli

Purity / Grade:

> 90%

Amino Acids:

Val22~Cys167

SwissProt:

P41159

Predicted Molecular Weight:

46.0kDa

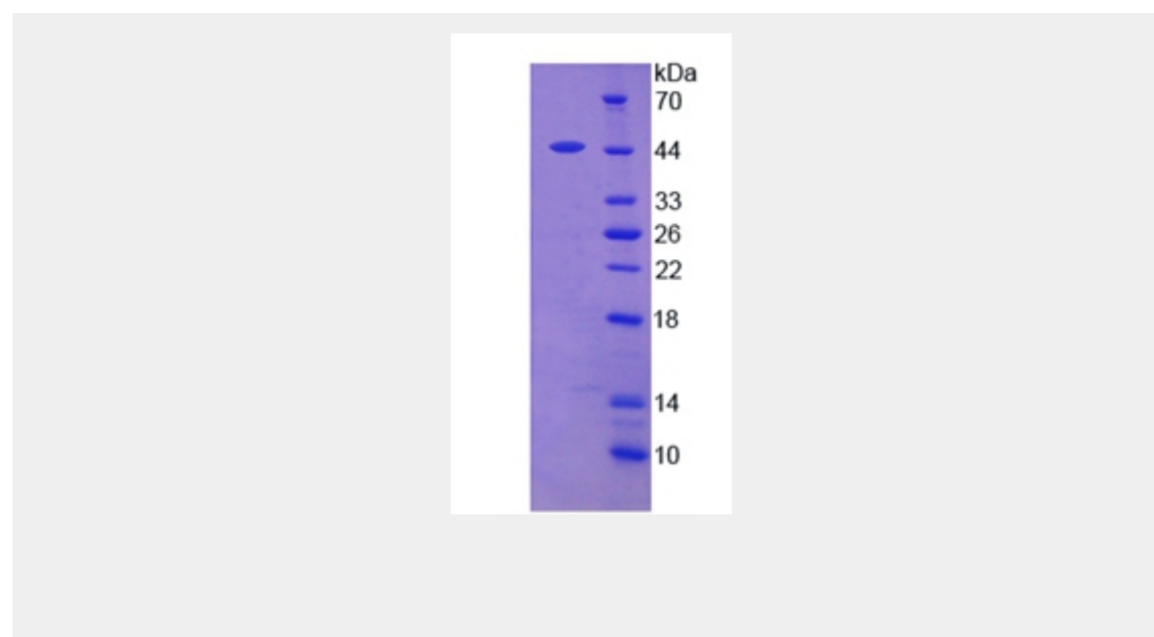
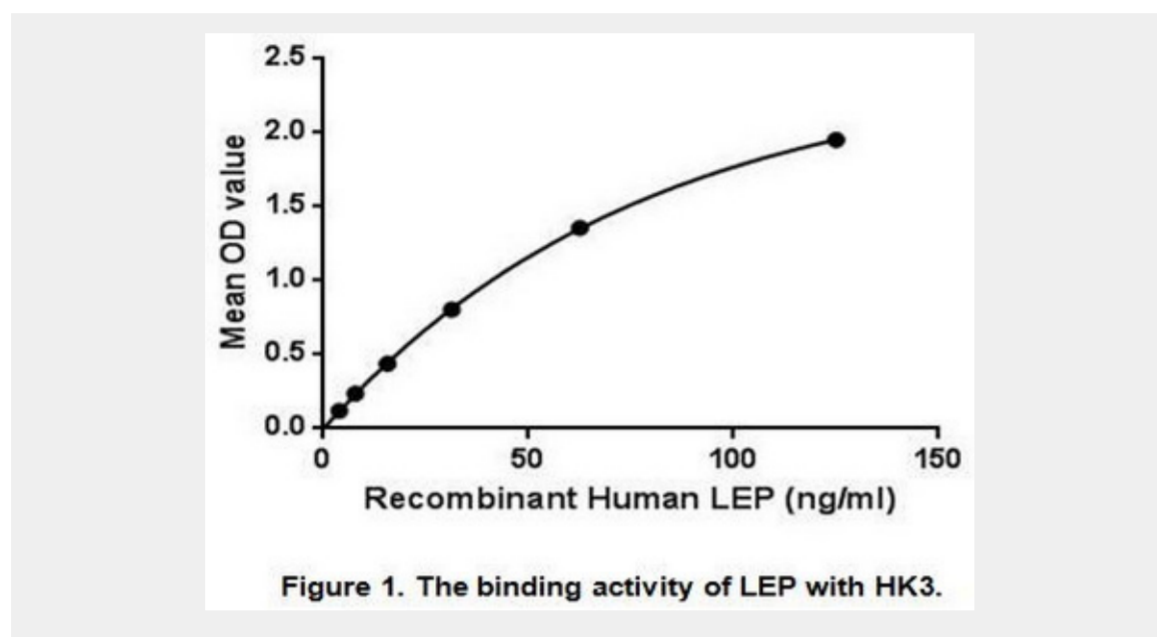
Observed Molecular Weight:

46kDa

Tags:

N-terminal His and GST Tag

Product Description



All products are for RESEARCH USE ONLY. Not for diagnostic & therapeutic purposes!