

Active Chloride Channel Accessory 1 (CLCA1)

Catalog No: **tcup9091**



Available Sizes

Size: 10ug

Size: 50ug

Size: 200ug



Specifications

Application:

Cell culture; Activity Assays.

Species:

Homo sapiens (Human)

Source:

-

Purity / Grade:

> 97%

Amino Acids:

Asn416~Arg670

SwissProt:

A8K7I4

Predicted Molecular Weight:

28.4kDa

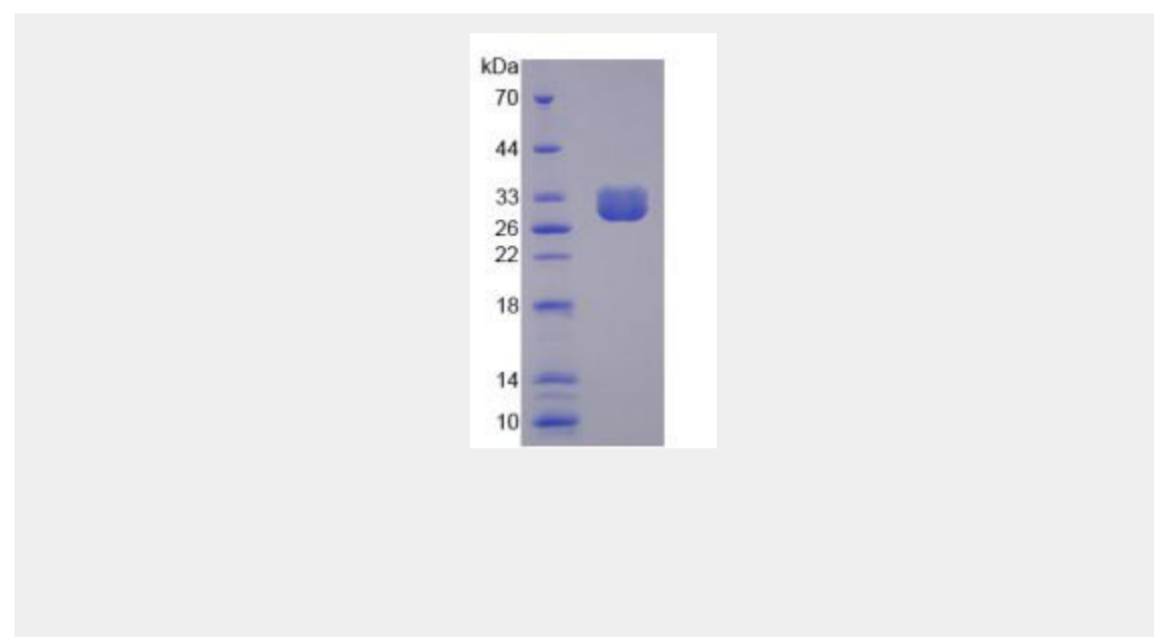
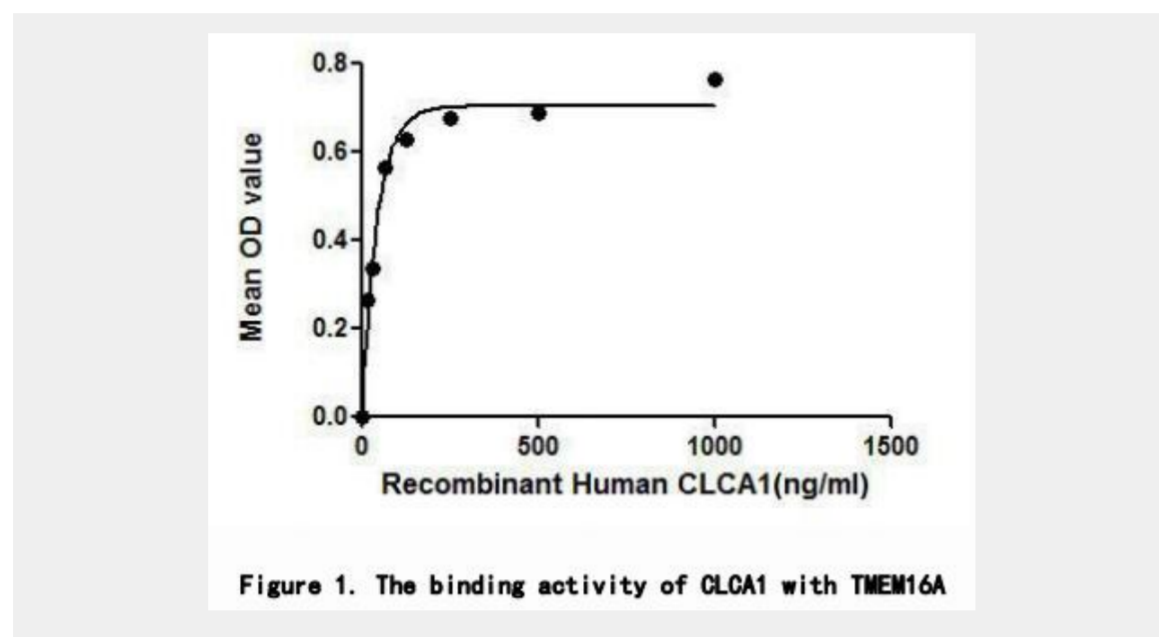
Observed Molecular Weight:

28kDa

Tags:

N-terminal His Tag

Product Description



All products are for RESEARCH USE ONLY. Not for diagnostic & therapeutic purposes!