

OVA Conjugated Corticotropin Releasing Hormone (CRH)

Catalog No: tcup8877



Available Sizes

Size: 10ug

Size: 50ug

Size: 200ug



Specifications

Application:

Immunogen; SDS-PAGE; WB

Species:

Rattus norvegicus (Rat)

Source:

chemical synthesis

Purity / Grade:

> 90%

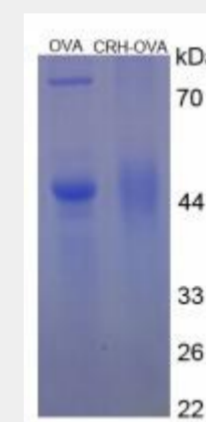
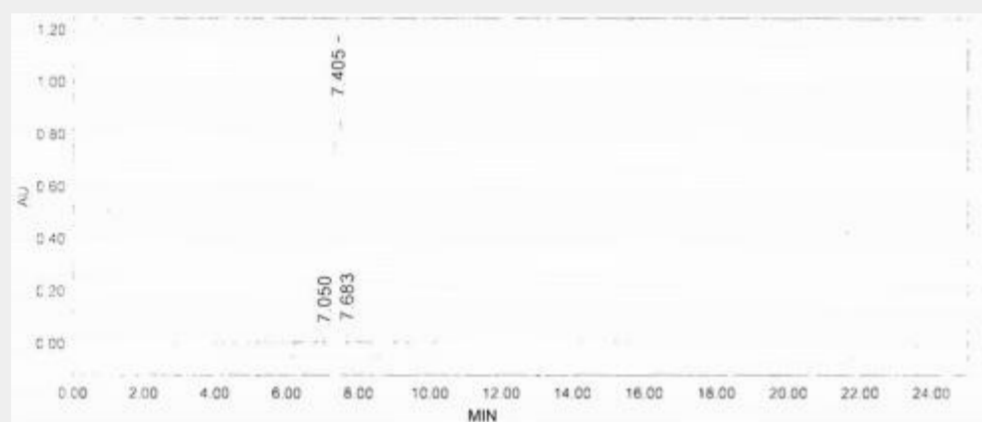
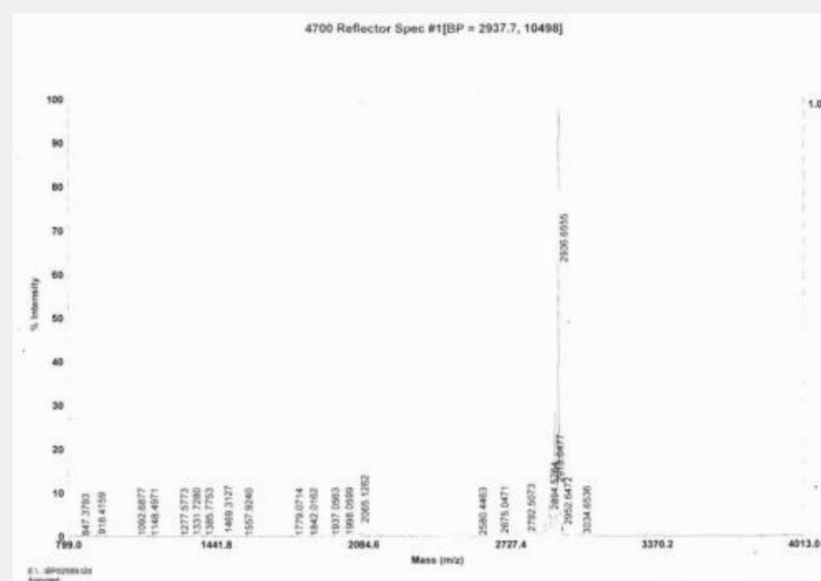
Tags:

No tag

Product Description

Protein Conjugation

EEPPIS LDLTFFHLLRE VLEMARAEQ



All products are for RESEARCH USE ONLY. Not for diagnostic & therapeutic purposes!