

BSA conjugated Salusin Alpha (SALa)

Catalog No: tcup8664



Available Sizes

Size: 10ug

Size: 50ug

Size: 200ug



Specifications

Application:

Immunogen; SDS-PAGE; WB

Species:

Homo sapiens (Human)

Source:

chemical synthesis

Purity / Grade:

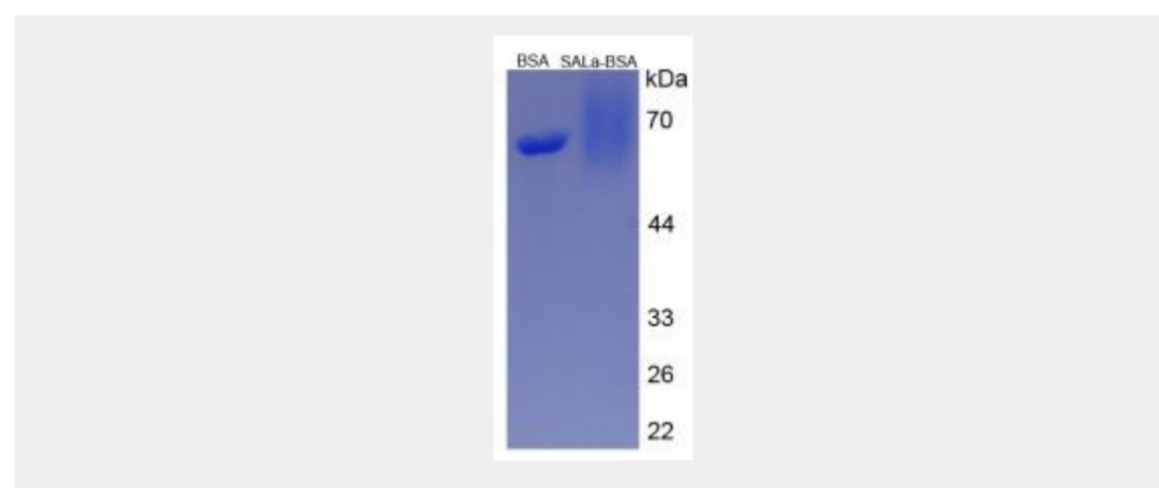
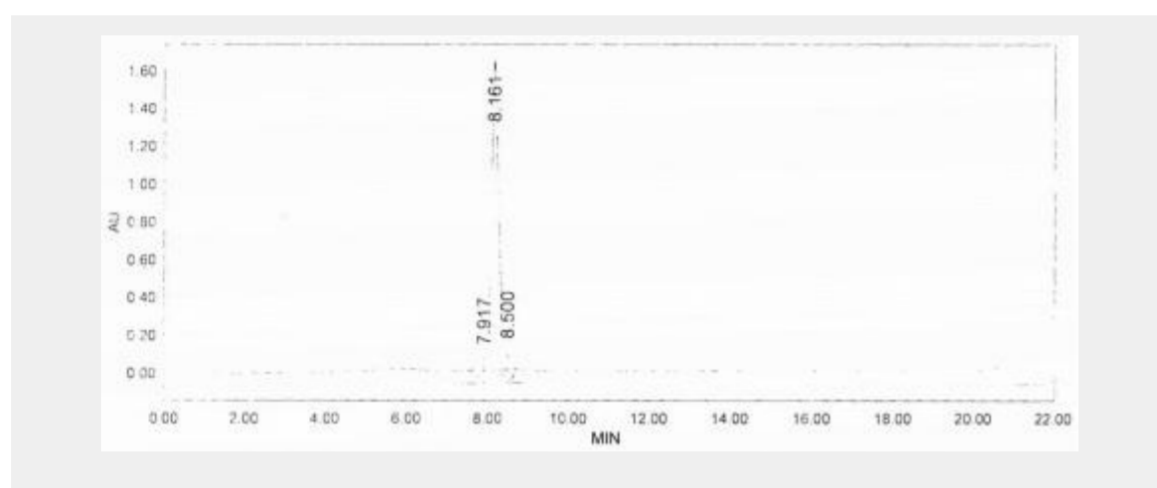
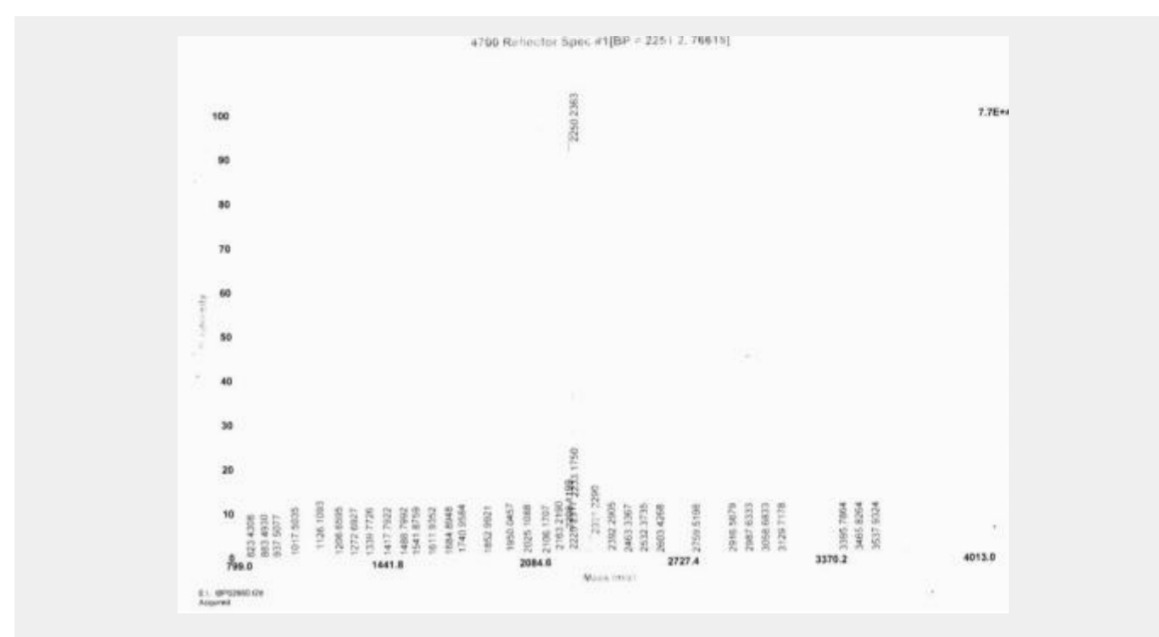
>90%

Tags:

No tag

Product Description

Protein Conjugation



All products are for RESEARCH USE ONLY. Not for diagnostic & therapeutic purposes!