

BSA conjugated C Peptide (CP)

Catalog No: **tcup8517**



Available Sizes

Size: 10ug

Size: 50ug

Size: 200ug



Specifications

Application:

Immunogen; SDS-PAGE; WB

Species:

Sus scrofa; Porcine (Pig)

Source:

chemical synthesis

Purity / Grade:

>90%

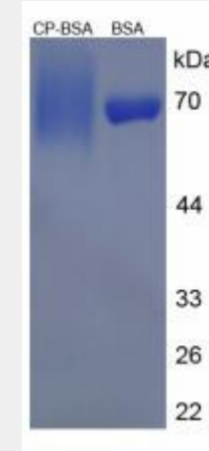
Tags:

No tag

Product Description

Protein Conjugation

EAEN PQAGAVELGG GLGGLQALAL EGPPQ



All products are for RESEARCH USE ONLY. Not for diagnostic & therapeutic purposes!