

# Recombinant ATPase, Ca<sup>++</sup> TransPorting, Cardiac Muscle, Slow Twitch 2 (ATP2A2)

Catalog No: tcup6947



## Available Sizes

---

**Size:** 10ug

**Size:** 50ug

**Size:** 200ug



## Specifications

---

**Application:**

Positive Control; Immunogen; SDS-PAGE; WB.

**Species:**

Homo sapiens (Human)

**Source:**

E.coli

**Purity / Grade:**

≥ 92%

**Amino Acids:**

Ile315~Met756

**SwissProt:**

P16615

**Predicted Molecular Weight:**

78.2kDa

**Observed Molecular Weight:**

78.2kDa

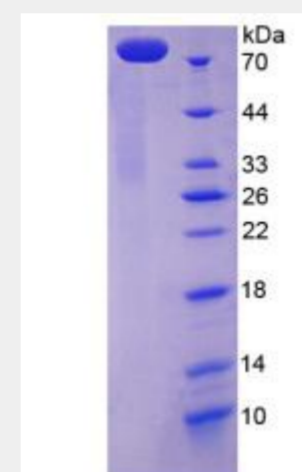
**Tags:**

two N-terminal Tags, His-tag and GST-tag

**Product Description**

Prokaryotic expression

```
ITTCLA LGTRMAKKN AIVRSLPSVE TLGCTSVICS
DKTGLTTNQ MSVCRMFILD RVEGDTCSLN EFTITGSTYA PIGEVHKDDK
PVNCHQYDGL VELATICALC NDSALDYNEA KGVYEKVGEA TETALTCLVE
KMNVFDTELK GLSKIERANA CNSVIKQLMK KEFTLEFSRD RKSMSVYCTP
NKPSRTSMK MFVKGAPGV IDRCTHIRVG STKVPMTSGV KQKIMSVIRE
WGSQSDTLRC LALATHDNPL RREEMHLED ANFIKYETNL TFGCVGMLD
PPRIEVASSV KLCRQAGIRV IMITGDNKGT AVAICRRIGI FGQDEDVTSK
AFTGREFDEL NPSAQRDACL NARCFARVEP SHKSKIVEFL QSFDEITAMT
GDGVNDAPAL KKAIEIGIAMG SGTAVAKTAS EMVLADDNFS TIVAAVEEGR
AIYNNM
```



All products are for RESEARCH USE ONLY. Not for diagnostic & therapeutic purposes!