

Recombinant ATPase, Na⁺/K⁺ Transporting Alpha 1 Polypeptide (ATP1a1)

Catalog No: tcup6945



Available Sizes

Size: 10ug

Size: 50ug

Size: 200ug



Specifications

Application:

Positive Control; Immunogen; SDS-PAGE; WB.

Species:

Oryctolagus cuniculus (Rabbit)

Source:

E.coli

Purity / Grade:

> 90%

Amino Acids:

Thr339~Leu772

SwissProt:

Q9N0Z6

Predicted Molecular Weight:

50.9kDa

Observed Molecular Weight:

50.9kDa

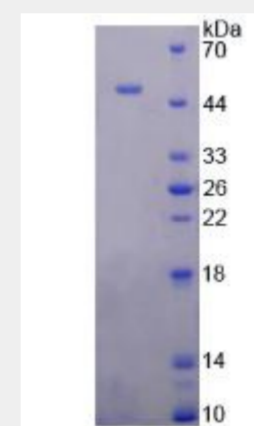
Tags:

two N-terminal Tags, His-tag and T7-tag

Product Description

Prokaryotic expression

```
TV TVCLTLAKR
MARKNCLVKN LEAVETLGST STICSDKTGT LTQNRMTVAH MWFDNQIHEA
DTTENQSGVS FDKTSATWLA LSRIAGLCNR AVFQANQENL PILKRAVAGD
ASESALLKCI ELCCGSVKEM RERYTKIVEI PFNSTNKYQL SIHKNLNANE
PRHLLVMKGA PERILDRCSS ILLHGKEQPL DEELKDAFQN AYLELGGGLGE
RVLGFCHLLL PDEQFPEGFQ FDTDEVNFPV DNLCFIGLIS MIDPPRAAVP
DAVGKCRSAG IKVIMVTGDH PITAKAIAKG VGIISEGNET VEDIAARLNI
PVSQVNPDA KACVVHGSDL KDMTSEQLDD ILKYHTEIVF ARTSPQQKLI
IVEGCQRQGA IVAVTGDGVN DSPALKKADI GVAMGIAGSD VSKQAADMIL
LDDNFASIVT GVEEGLIFD NL
```



All products are for RESEARCH USE ONLY. Not for diagnostic & therapeutic purposes!