

Recombinant S Phase Kinase Associated Protein 1 (SKP1)

Catalog No: **tcup6851**



Available Sizes

Size: 10ug

Size: 50ug

Size: 200ug



Specifications

Application:

Positive Control; Immunogen; SDS-PAGE; WB.

Species:

Homo sapiens (Human)

Source:

E.coli

Purity / Grade:

≥ 95%

Amino Acids:

Met1~Lys163

SwissProt:

P63208

Predicted Molecular Weight:

22.4kDa

Observed Molecular Weight:

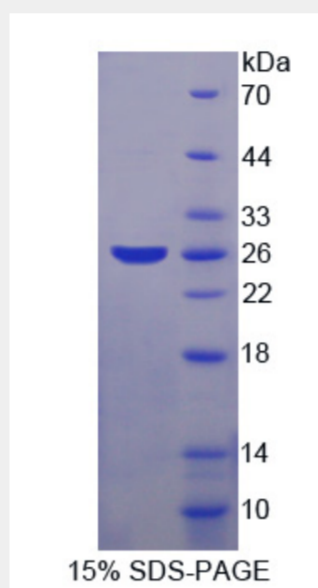
22.4kDa

Tags:

two N-terminal tags his-tag and T7 tag

Product Description

Prokaryotic expression



All products are for RESEARCH USE ONLY. Not for diagnostic & therapeutic purposes!