

Recombinant Phosphodiesterase 1A, Calmodulin Dependent (PDE1A)

Catalog No: tcup6784



Available Sizes

Size: 10ug

Size: 50ug

Size: 200ug



Specifications

Application:

Positive Control; Immunogen; SDS-PAGE; WB.

Species:

Homo sapiens (Human)

Source:

E.coli

Purity / Grade:

≥ 98%

Amino Acids:

Gly2~Asp318

SwissProt:

P54750

Predicted Molecular Weight:

40.4kDa

Observed Molecular Weight:

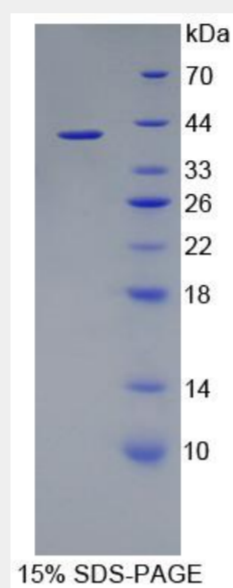
40.4kDa

Tags:

two N-terminal Tags, His-tag and T7-tag

Product Description

Prokaryotic expression



All products are for RESEARCH USE ONLY. Not for diagnostic & therapeutic purposes!