

# Recombinant Lysyl Oxidase Like Protein 1 (LOXL1)

Catalog No: tcup6752



## Available Sizes

**Size:** 10ug

**Size:** 50ug

**Size:** 200ug



## Specifications

**Application:**

Positive Control; Immunogen; SDS-PAGE; WB.

**Species:**

Homo sapiens (Human)

**Source:**

E.coli

**Purity / Grade:**

≥ 92%

**Amino Acids:**

Leu369~Ser574

**SwissProt:**

Q08397

**Predicted Molecular Weight:**

25.0kDa

**Observed Molecular Weight:**

25.0kDa

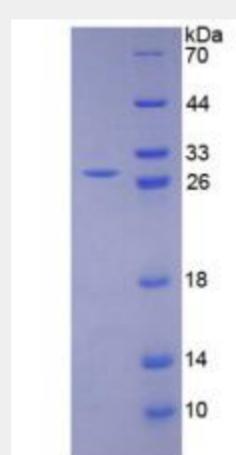
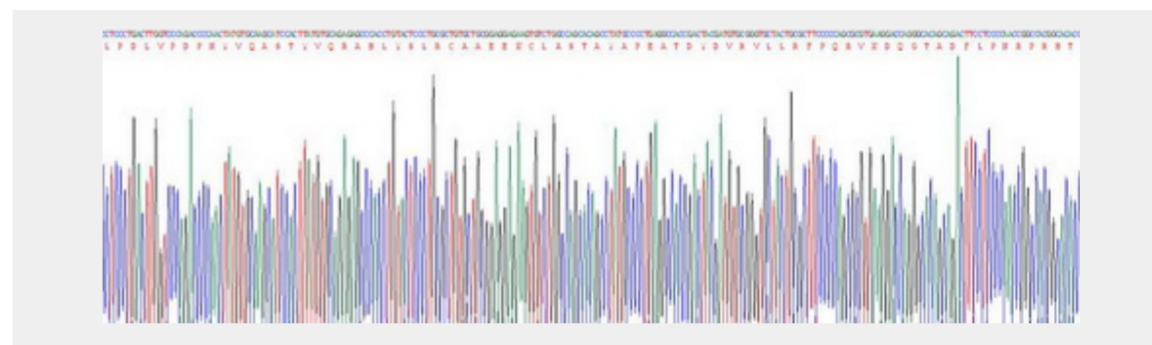
**Tags:**

N-terminal His-Tag

## Product Description

Prokaryotic expression

```
LP DLVDPNIVQ ASTYVQRAHL YSLRCAEEK  
CLASTAYAPE ATDYDVRVLL RFPQVKNQG TADFLPNRPR HTWEWSCHQ  
HYHSMDEFSH YDLLDAATGK KVAEGHKASF CLEDSTCDFG NLKRYACTSH  
TQGLSPGCYD TYNADIDCQW IDITDVQPGN YILKVHVNPY YIVLESDFTN  
NVVRCNIHYT GRVVSATNCK IVQS
```



All products are for RESEARCH USE ONLY. Not for diagnostic & therapeutic purposes!