

Recombinant Carboxypeptidase E (CPE)

Catalog No: **tcup6661**



Available Sizes

Size: 10ug

Size: 50ug

Size: 200ug



Specifications

Application:

Positive Control; Immunogen; SDS-PAGE; WB.

Species:

Homo sapiens (Human)

Source:

E.coli

Purity / Grade:

≥ 98%

Amino Acids:

Ile151~Gly317

SwissProt:

P16870

Predicted Molecular Weight:

50.8kDa

Observed Molecular Weight:

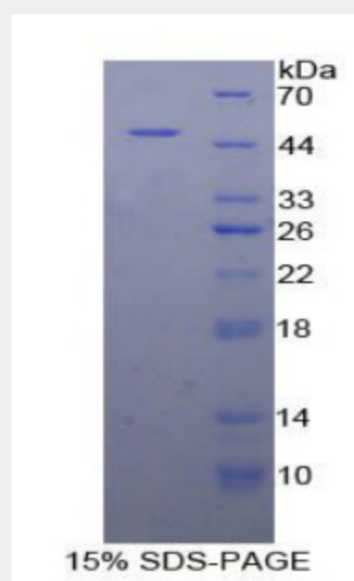
50.8kDa

Tags:

two N-terminal Tags, His-tag and GST-tag

Product Description

Prokaryotic expression



All products are for RESEARCH USE ONLY. Not for diagnostic & therapeutic purposes!