

Recombinant Cytokine Receptor Like Factor 1 (CRLF1)

Catalog No: tcup6649



Available Sizes

Size: 10ug

Size: 50ug

Size: 200ug



Specifications

Application:

Positive Control; Immunogen; SDS-PAGE; WB.

Species:

Homo sapiens (Human)

Source:

E.coli

Purity / Grade:

≥ 95%

Amino Acids:

Pro138~Arg422

SwissProt:

O75462

Predicted Molecular Weight:

62.2kDa

Observed Molecular Weight:

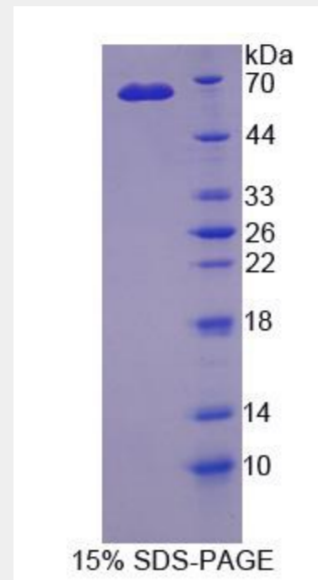
62.2kDa

Tags:

two N-terminal Tags, His-tag and GST-tag

Product Description

Prokaryotic expression



All products are for RESEARCH USE ONLY. Not for diagnostic & therapeutic purposes!