

Recombinant Wilms Tumor Protein (WT1)

Catalog No: **tcup6610**



Available Sizes

Size: 10ug

Size: 50ug

Size: 200ug



Specifications

Application:

Positive Control; Immunogen; SDS-PAGE; WB.

Species:

Homo sapiens (Human)

Source:

E.coli

Purity / Grade:

> 90%

Amino Acids:

Leu310~Leu449

SwissProt:

P19544

Predicted Molecular Weight:

46.5kDa

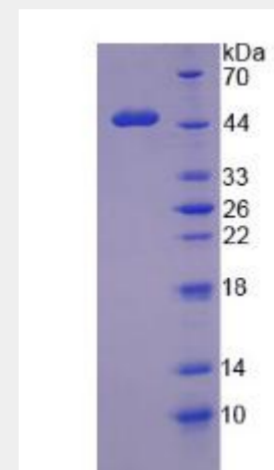
Observed Molecular Weight:

46.5kDa

Product Description

Prokaryotic expression

```
L VRSASETSEK RPFMCAYPGC NKRYFKLSHL QMHSRKHTGE  
KPYQCDFKDC ERFFSRSDQL KRHQRRHTGV KPFQCKTCQR KFSRSDHLKT  
HTRTHTGKTS EKPFSCRWPS CQKKFARSDE LVRHHNMHQR NMTKLQLAL
```



All products are for RESEARCH USE ONLY. Not for diagnostic & therapeutic purposes!