

# Recombinant Sphingosine 1 Phosphate Lyase 1 (SGPL1)

Catalog No: **tcup6455**



## Available Sizes

---

**Size:** 10ug

**Size:** 50ug

**Size:** 200ug



## Specifications

---

**Application:**

Positive Control; Immunogen; SDS-PAGE; WB.

**Species:**

Homo sapiens (Human)

**Source:**

E.coli

**Purity / Grade:**

≥ 95%

**Amino Acids:**

Gln239~Arg493

**SwissProt:**

O95470

**Predicted Molecular Weight:**

29.9kDa

**Observed Molecular Weight:**

29.9kDa

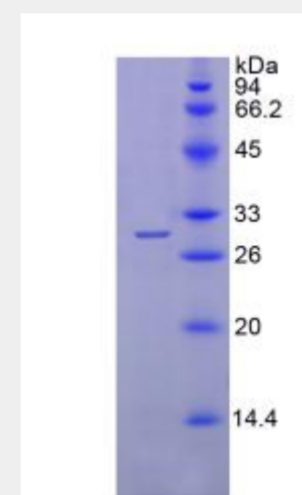
**Tags:**

N-terminal His-Tag

**Product Description**

Prokaryotic expression

```
                QS AHAAFNKAAS
YFGMKIVRVP LTKMMEVDVR AMRRAISRNT AMLVCSTPQF PHGVDPVPE
VAKLAVKYKI PLHVDACLGG FLIVFMEKAG YPLEHPPDFR VKGVTSISAD
THKYGYPKG SSLVLYSDKK YRNYQFFVDT DWQGGIYASP TIAGSRPGGI
SAACWAALMH FGENGYVEAT KQIIKTARFL KSELENIKGI FVFGNPQLSV
IALGSRDFDI YRLSNLMTAK GWNLNLQFP PSIHFCITLL HAR
```



All products are for RESEARCH USE ONLY. Not for diagnostic & therapeutic purposes!