

# Recombinant B Cell CLL/Lymphoma 2 Like Protein (Bcl2L)

Catalog No: **tcup6374**



## Available Sizes

---

**Size:** 10ug

**Size:** 50ug

**Size:** 200ug



## Specifications

---

**Application:**

Positive Control; Immunogen; SDS-PAGE; WB.

**Species:**

Homo sapiens (Human)

**Source:**

E.coli

**Purity / Grade:**

≥ 95%

**Amino Acids:**

Ser2~Arg212

**SwissProt:**

Q07817

**Predicted Molecular Weight:**

26.91kDa

**Observed Molecular Weight:**

26.91kDa

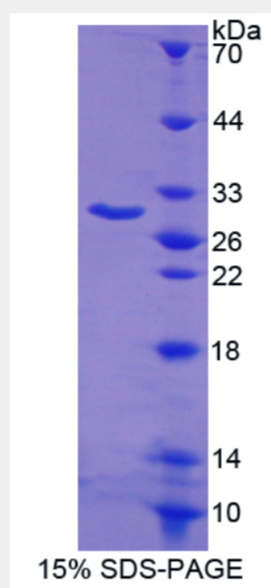
**Tags:**

two N-terminal Tags, His-tag and T7-tag

---

**Product Description**

Prokaryotic expression



All products are for RESEARCH USE ONLY. Not for diagnostic & therapeutic purposes!