

Recombinant Endothelial Cell Adhesion Molecule (ESAM)

Catalog No: **tcup6349**



Available Sizes

Size: 10ug

Size: 50ug

Size: 200ug



Specifications

Application:

Positive Control; Immunogen; SDS-PAGE; WB.

Species:

Rattus norvegicus (Rat)

Source:

E.coli

Purity / Grade:

≥ 98%

Amino Acids:

Met31~Ala251

SwissProt:

Q6AYD4

Predicted Molecular Weight:

29.8kDa

Observed Molecular Weight:

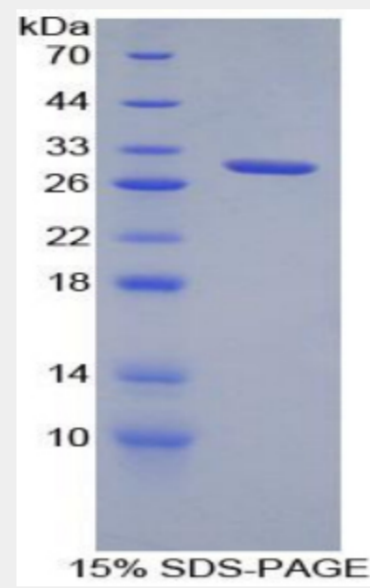
29.8kDa

Tags:

two N-terminal Tags, His-tag and S-tag

Product Description

Prokaryotic expression



All products are for RESEARCH USE ONLY. Not for diagnostic & therapeutic purposes!